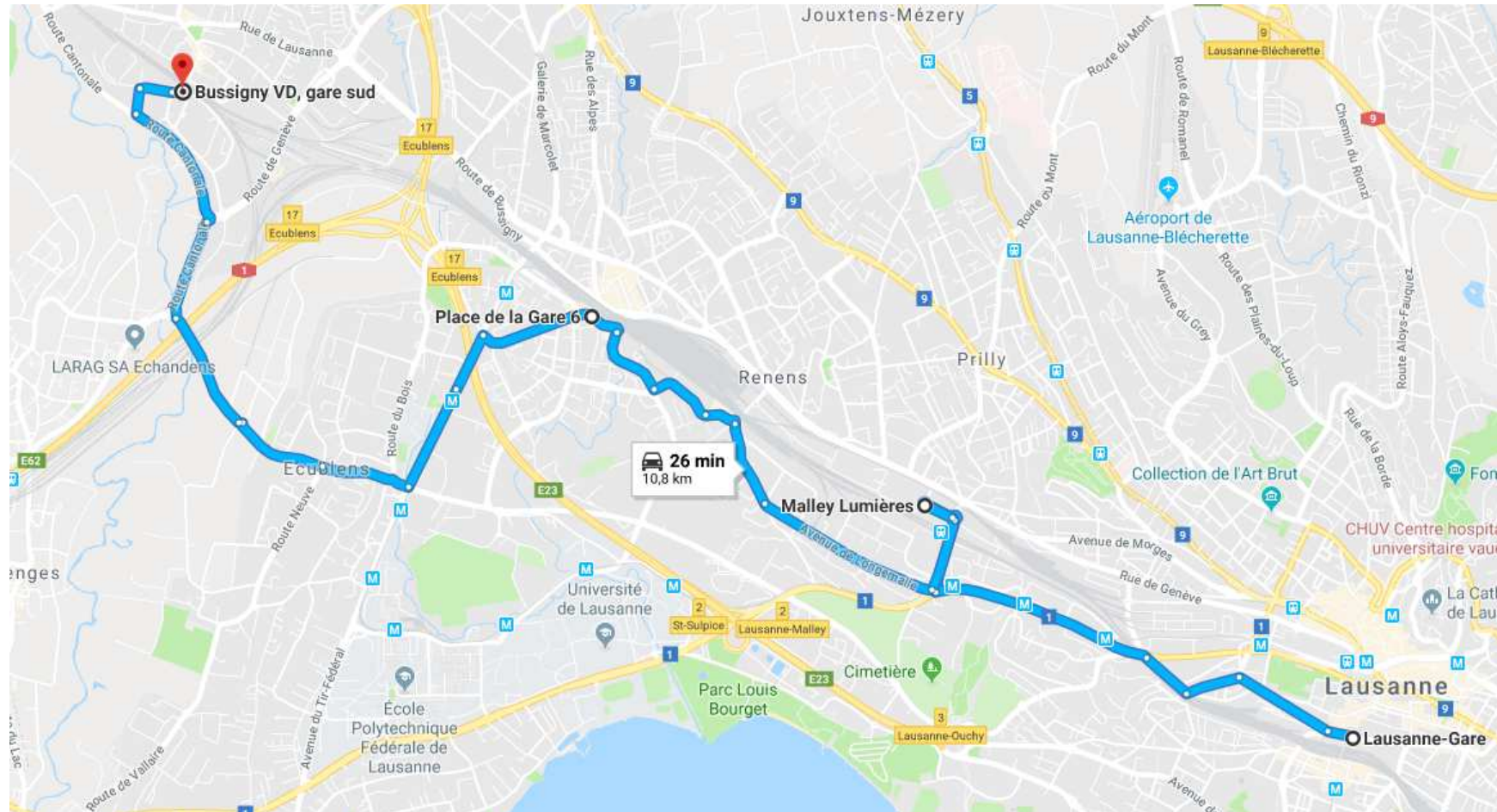




Remplacement CFF Lausanne—Renens- Bussigny Sud-

Vincent Borel

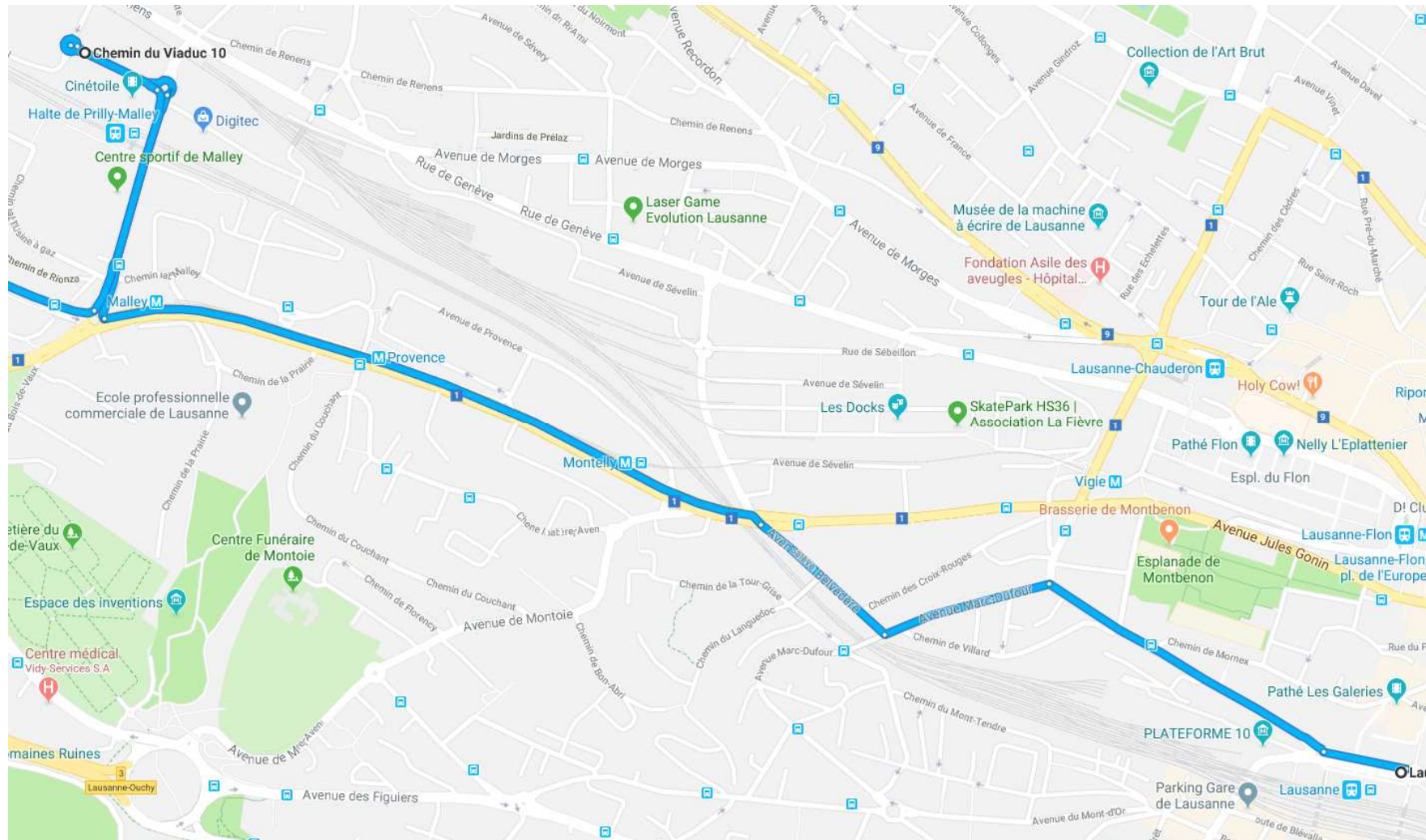
Parcours Lausanne – Bussigny, sud



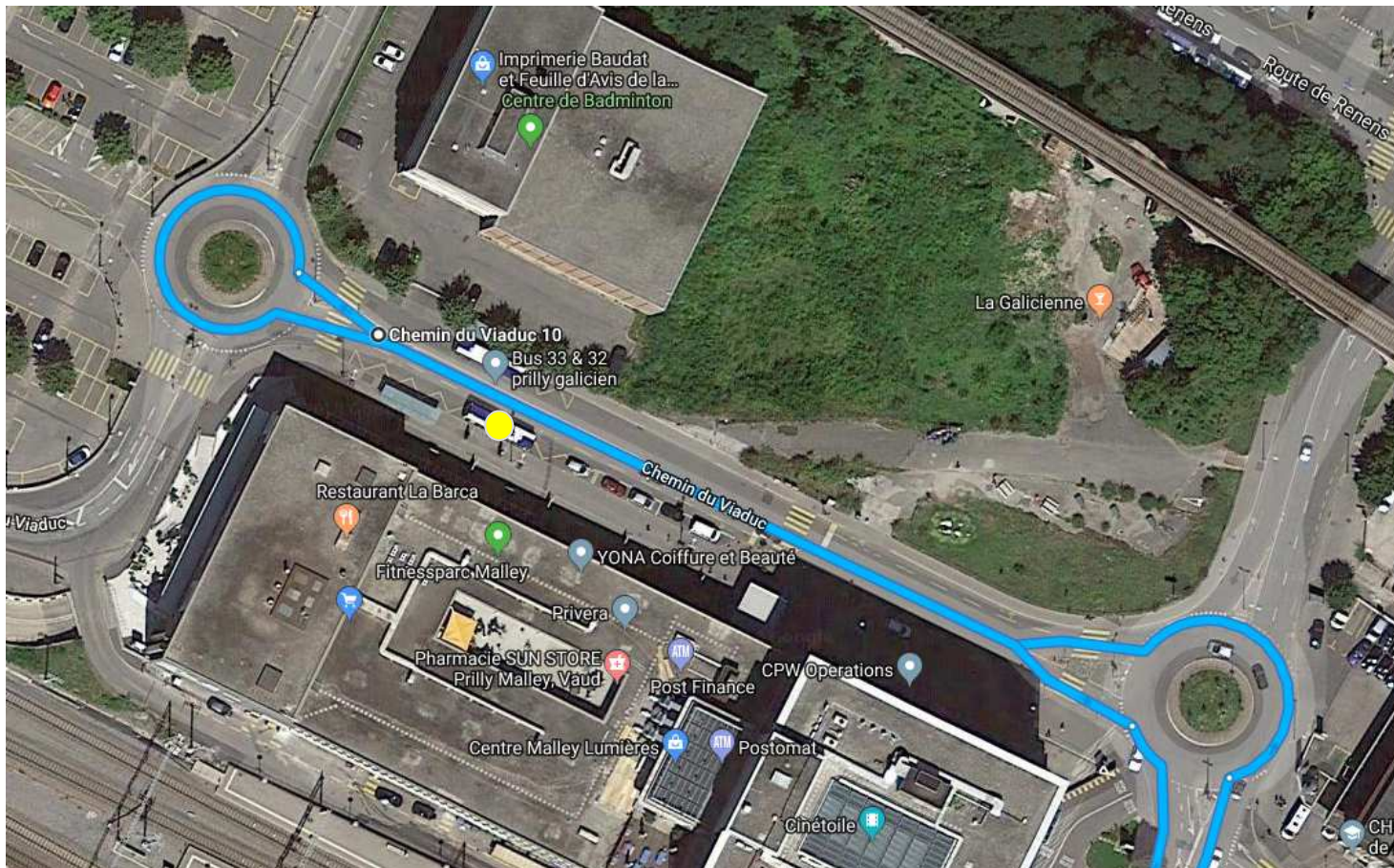
Lausanne, gare



Lausanne, gare – Prilly-Malley

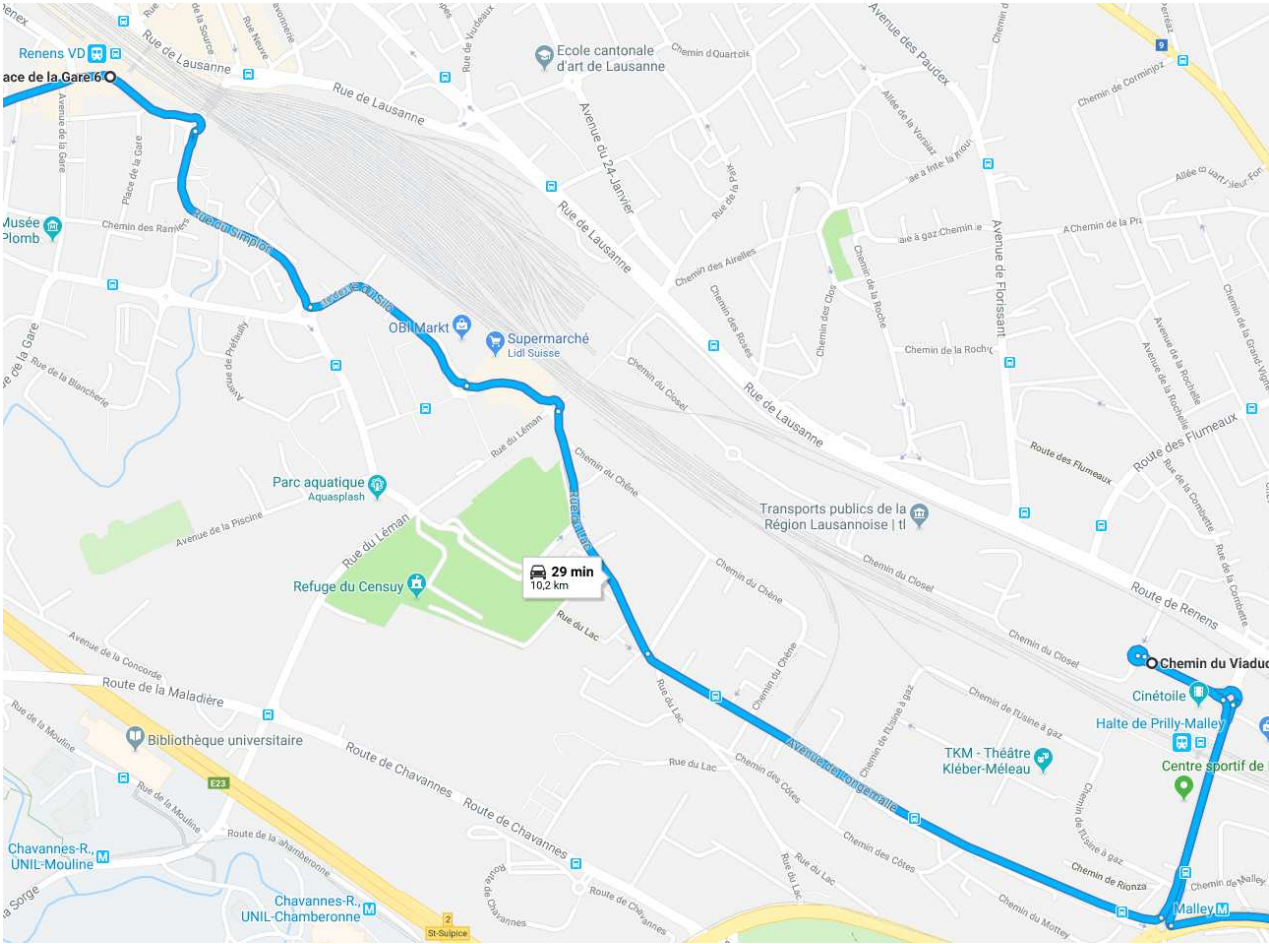


Prilly-Malley





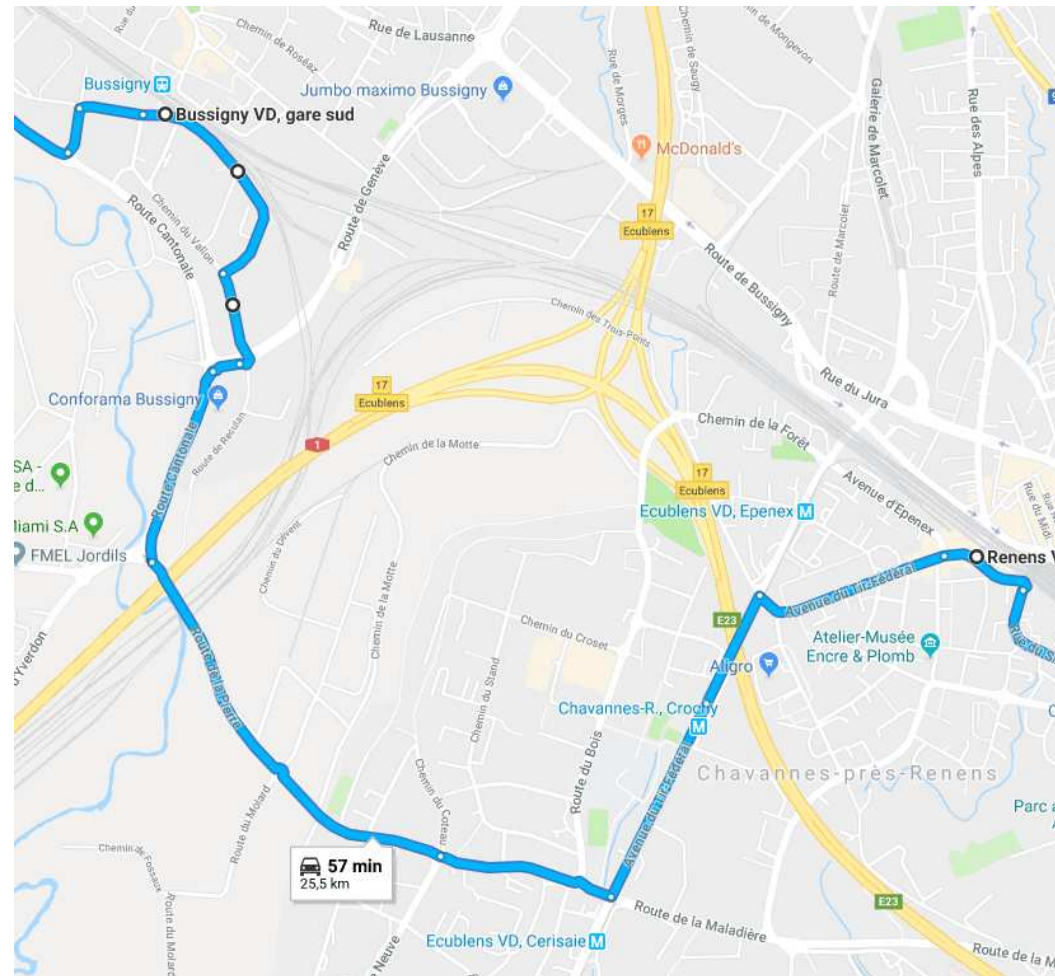
Prilly-Malley – Renens



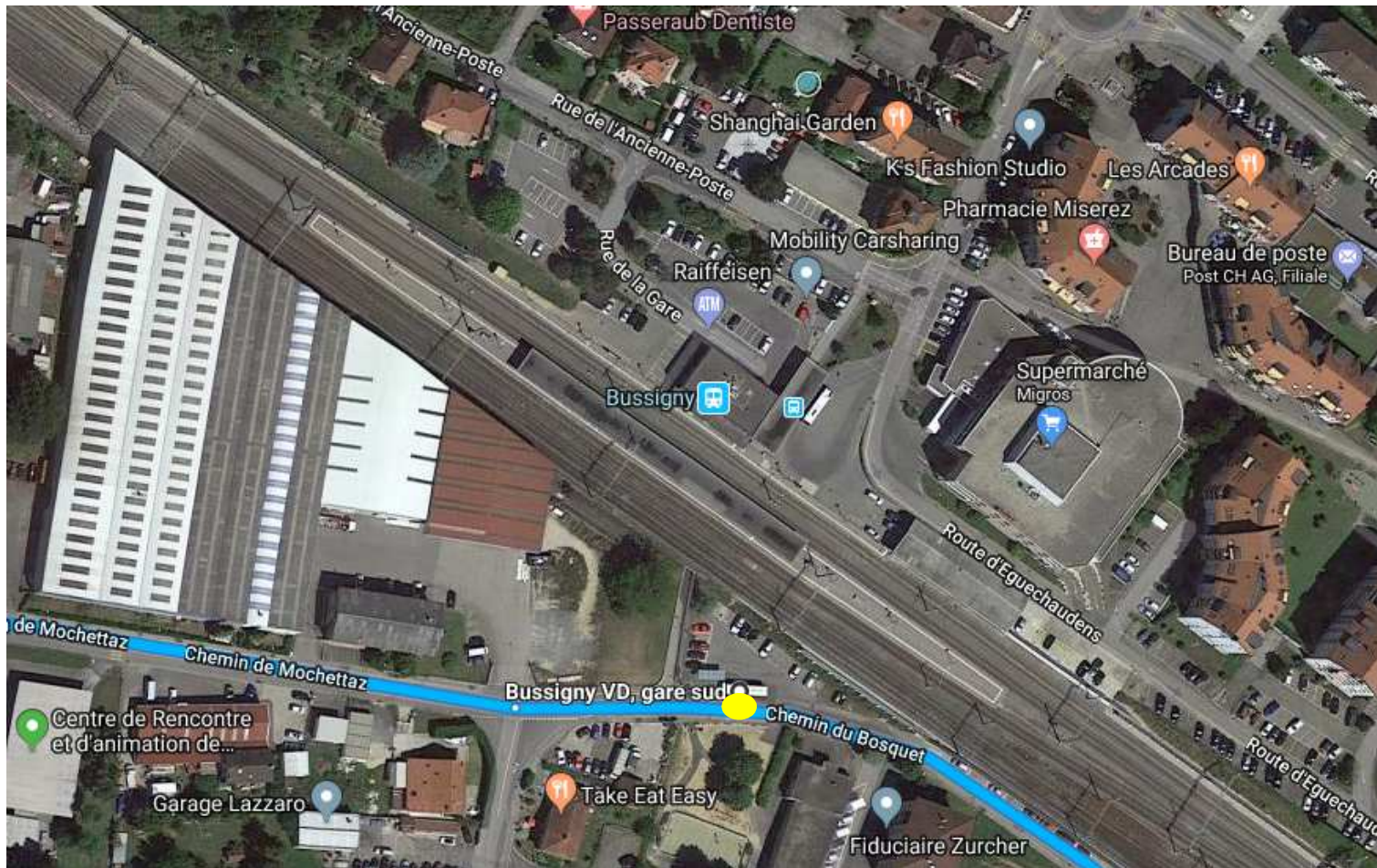
Renens, direction Morges



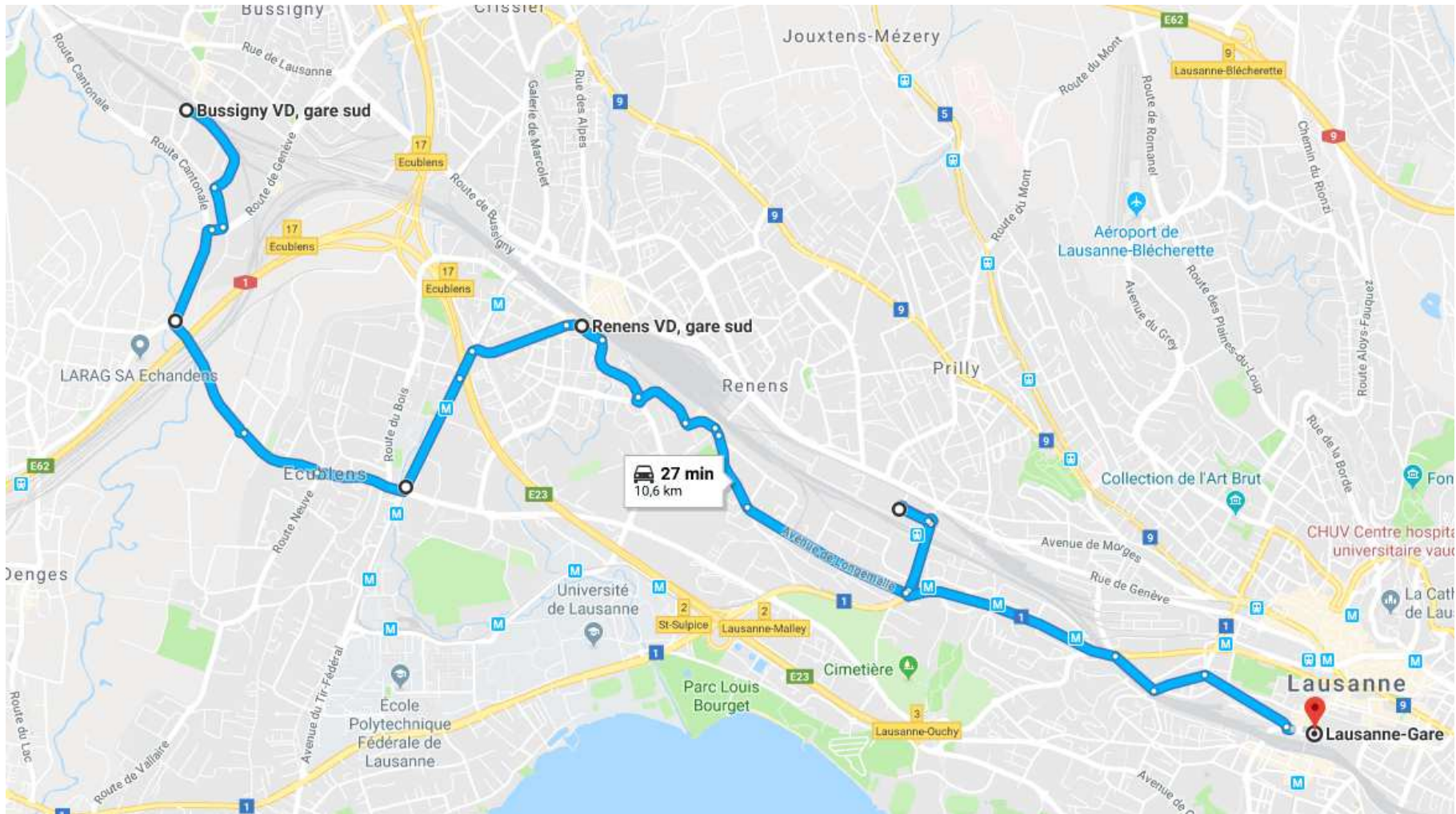
Renens – Bussigny, gare sud



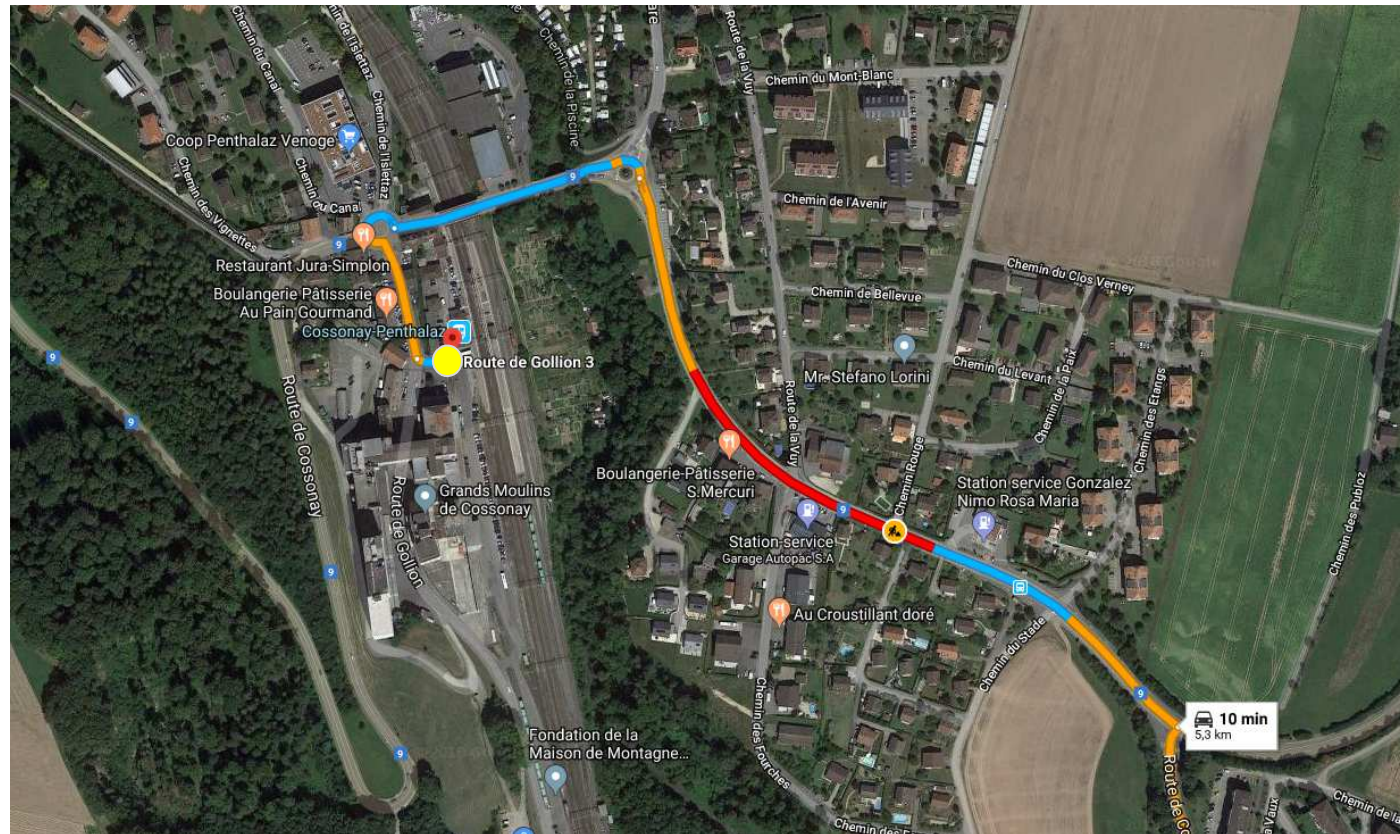
Bussigny, gare sud



Bussigny, Sud – Renens - Lausanne

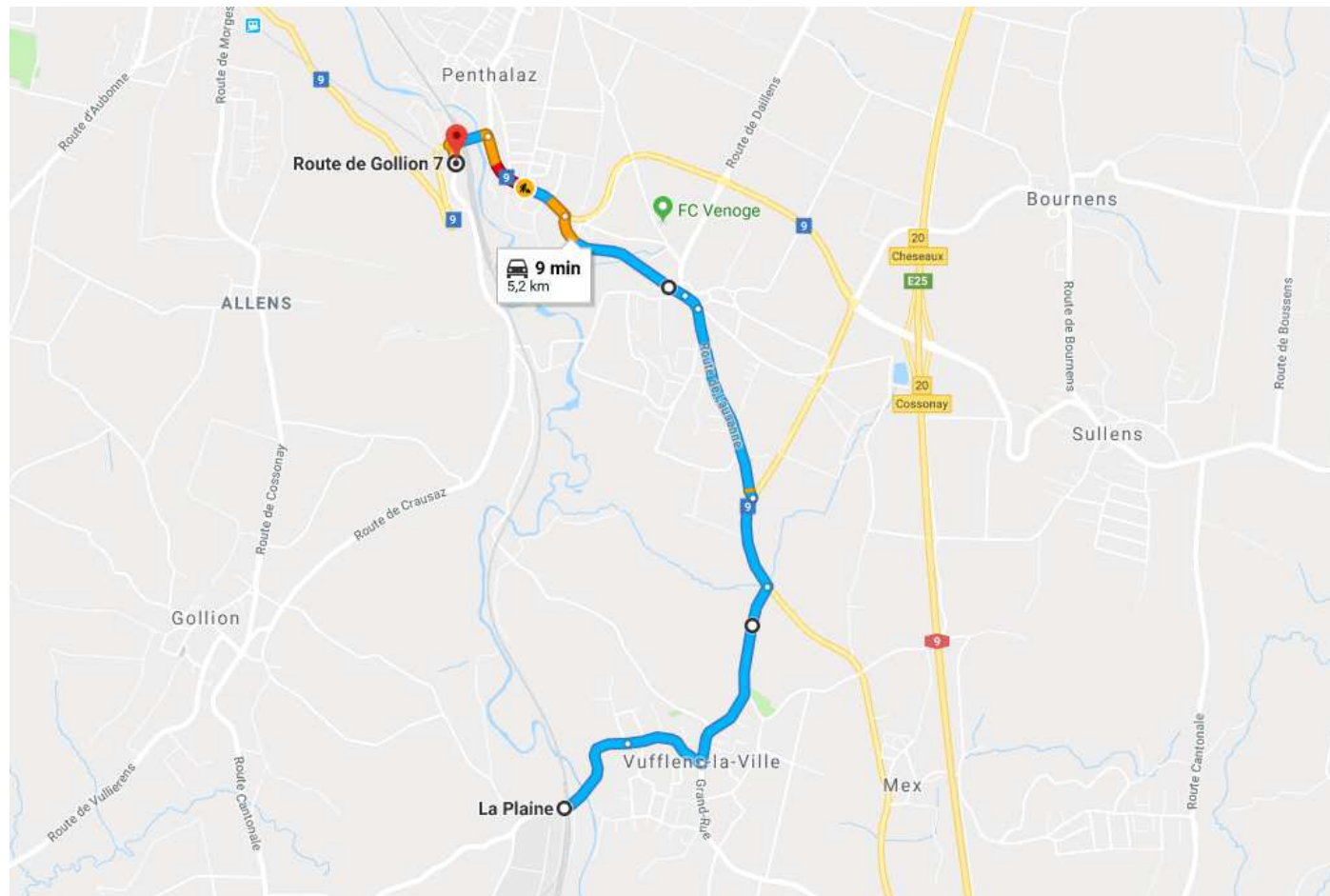


Cossonay-Penthalaz

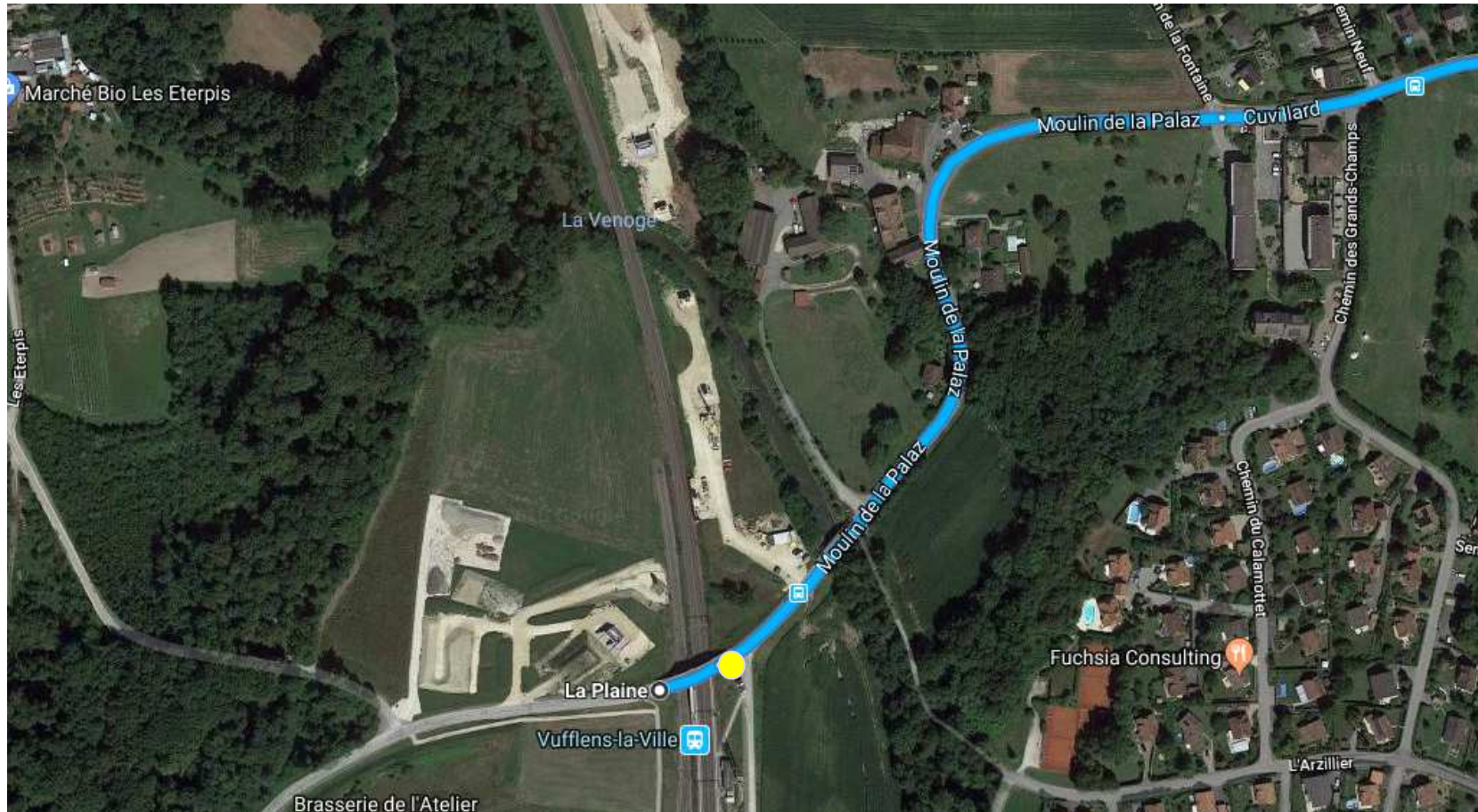


Arrêt CarPostal et MBC : Cossonay-Penthalaz, gare

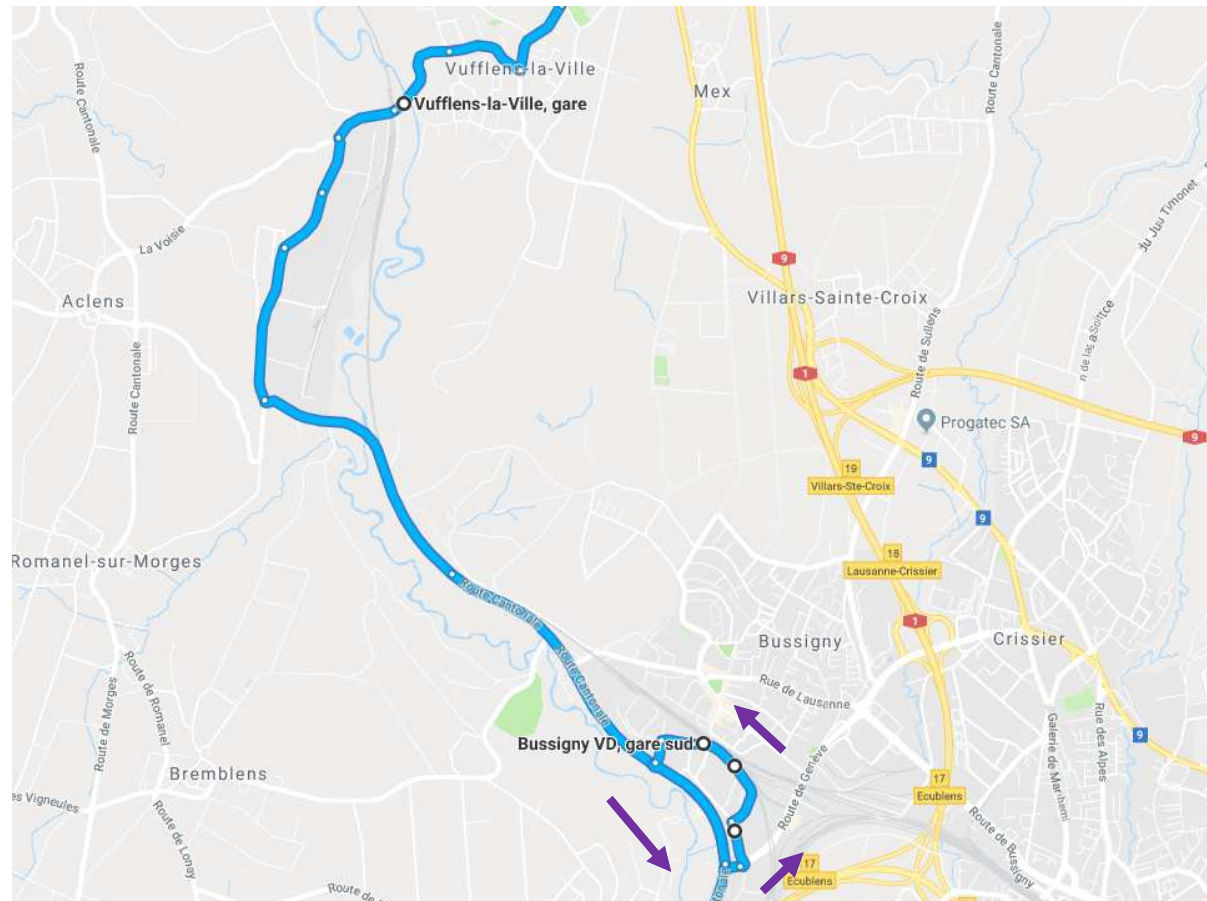
Cossonay-Penthalaz – Vufflens-la-Ville



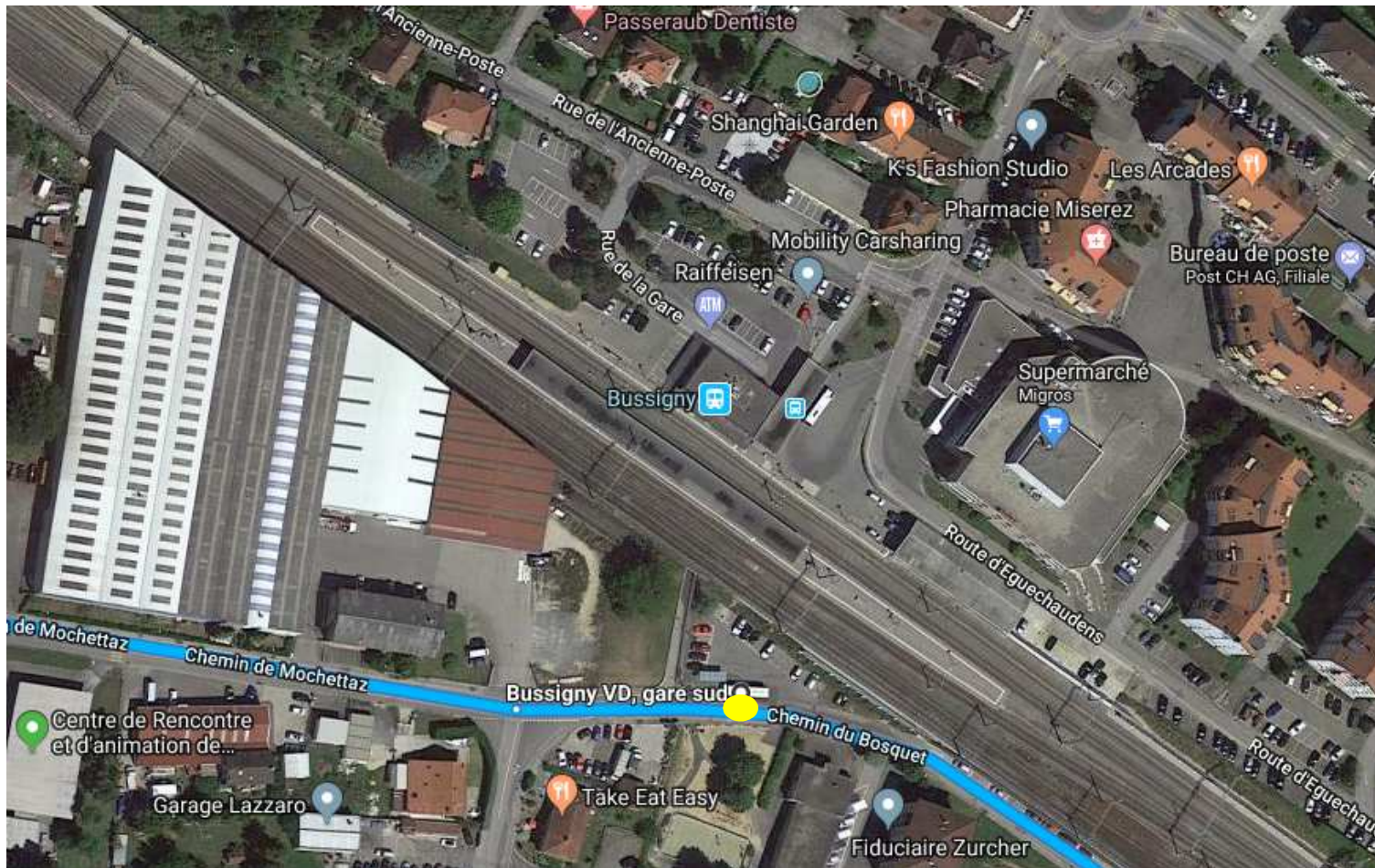
Vufflens-la-Ville



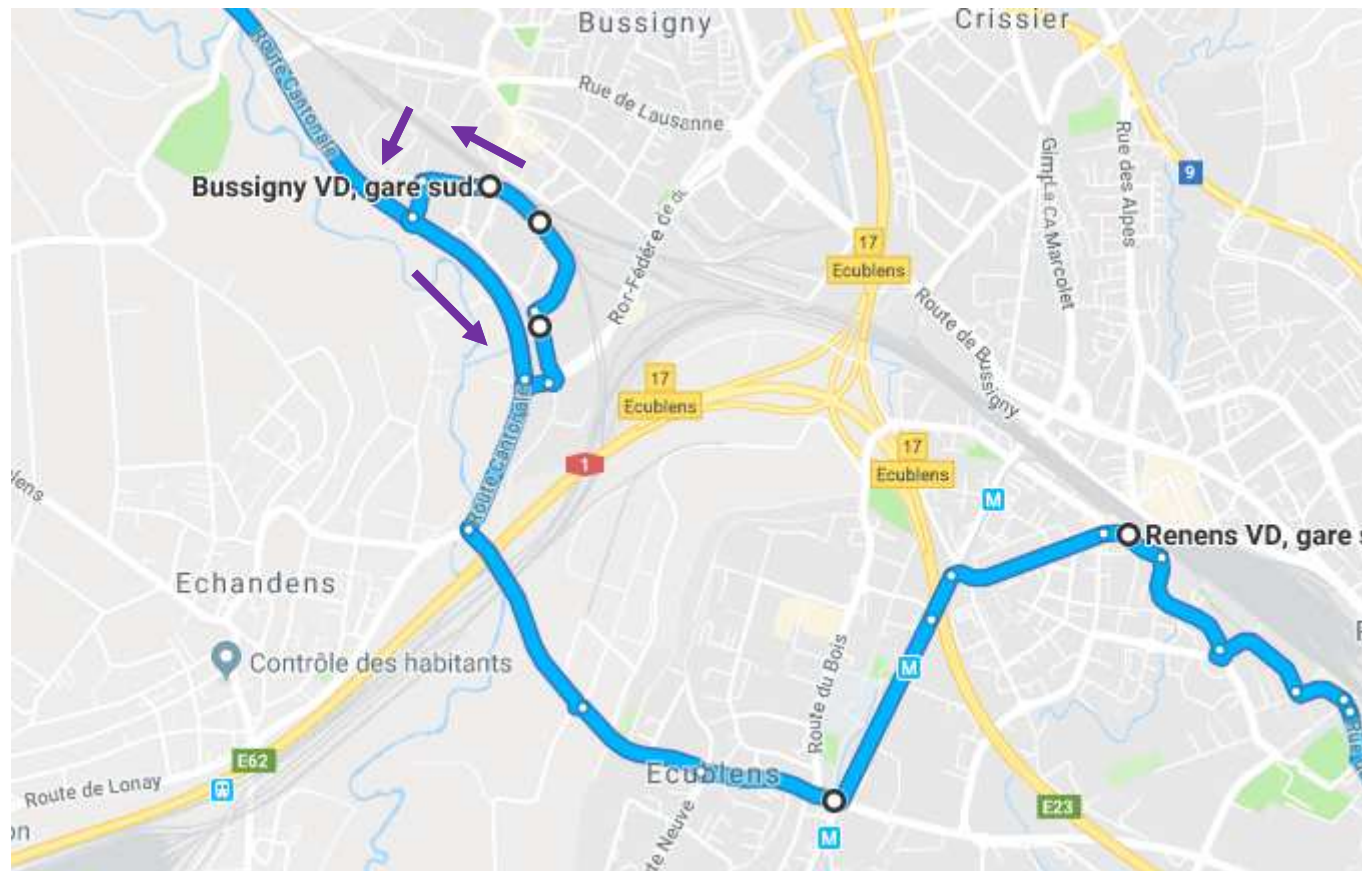
Vufflens-la-Ville - Bussigny



Bussigny, gare sud



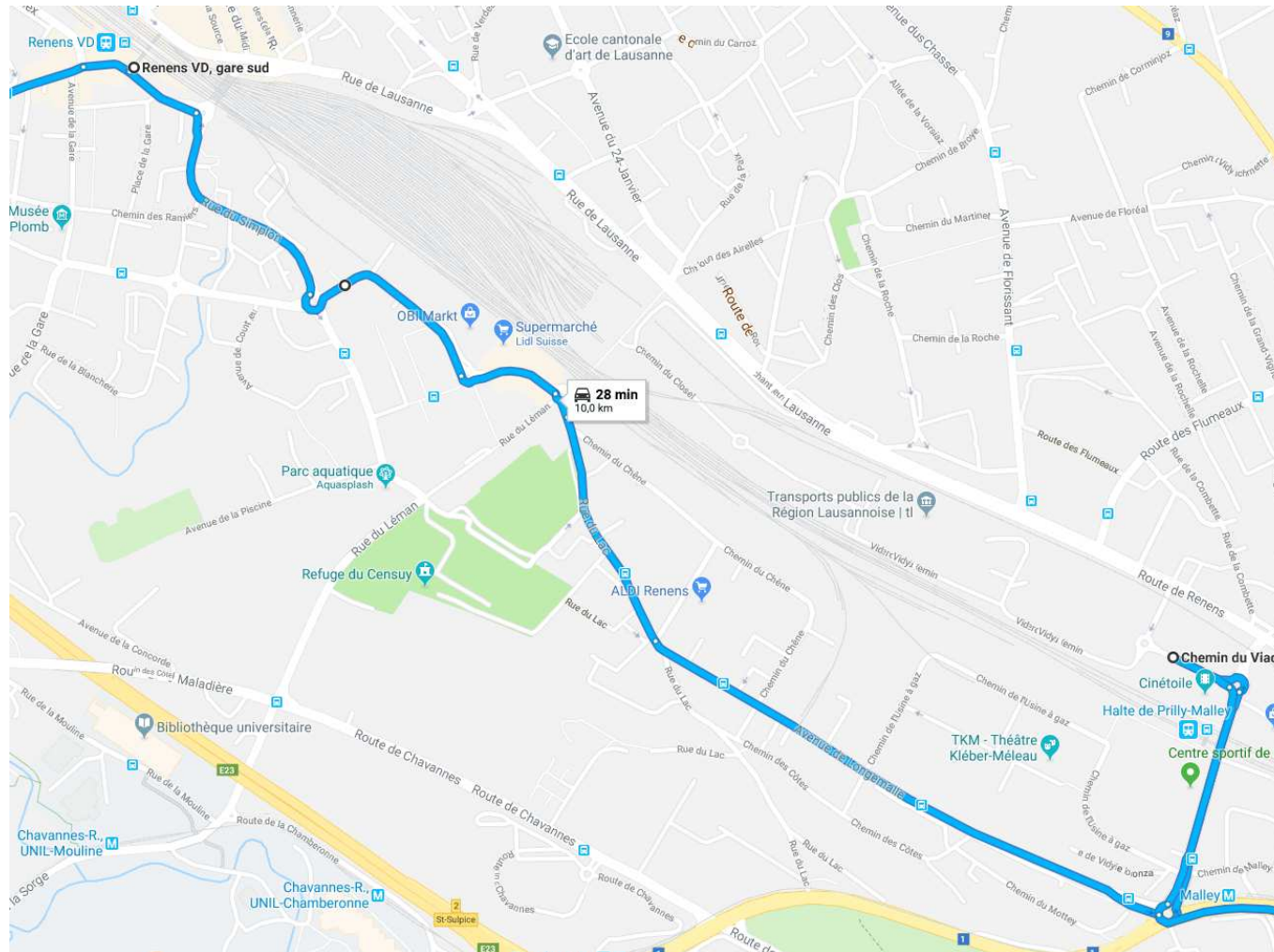
Bussigny, gare sud - Renens



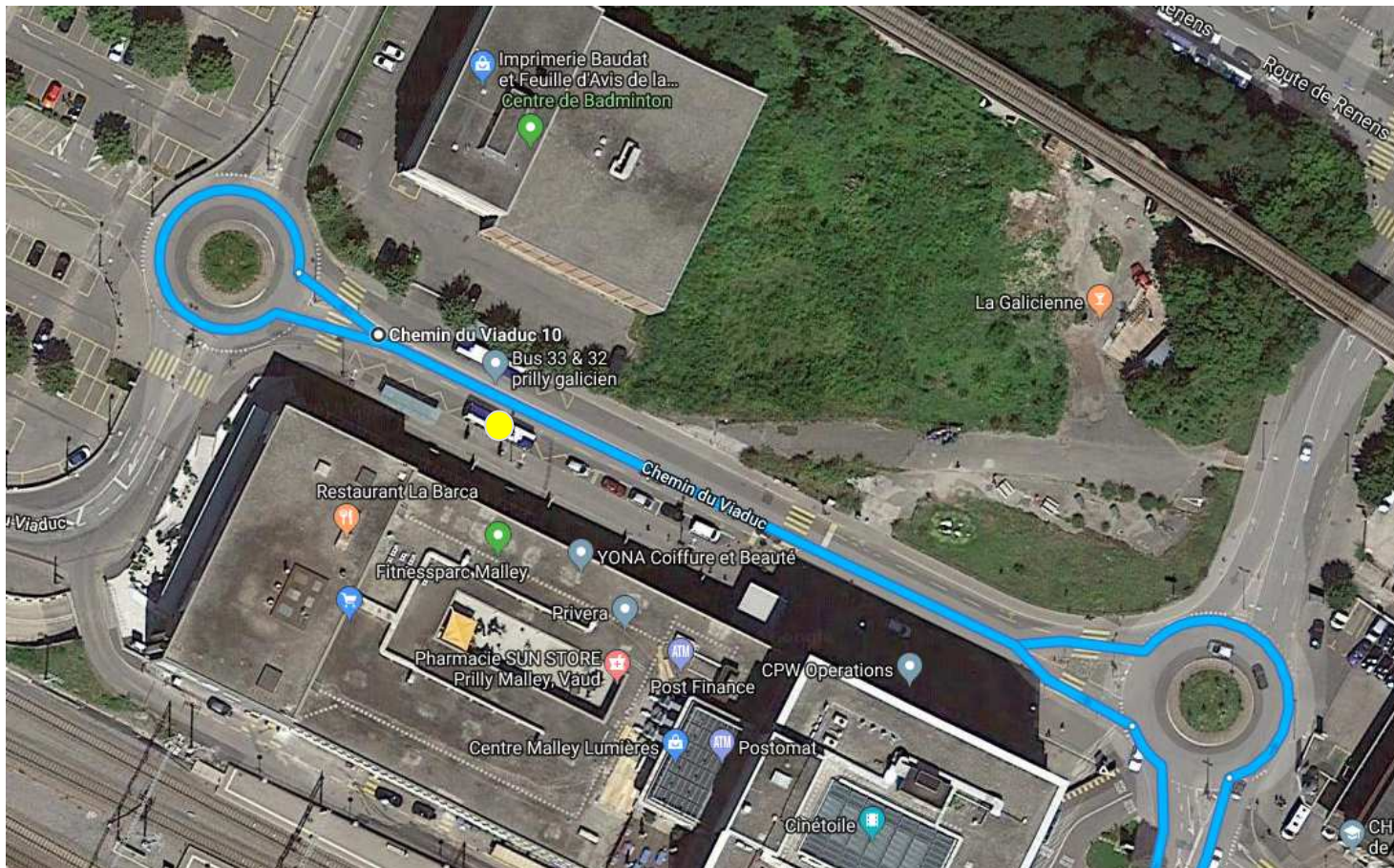
Renens, direction Lausanne



Renens – Prilly-Malley

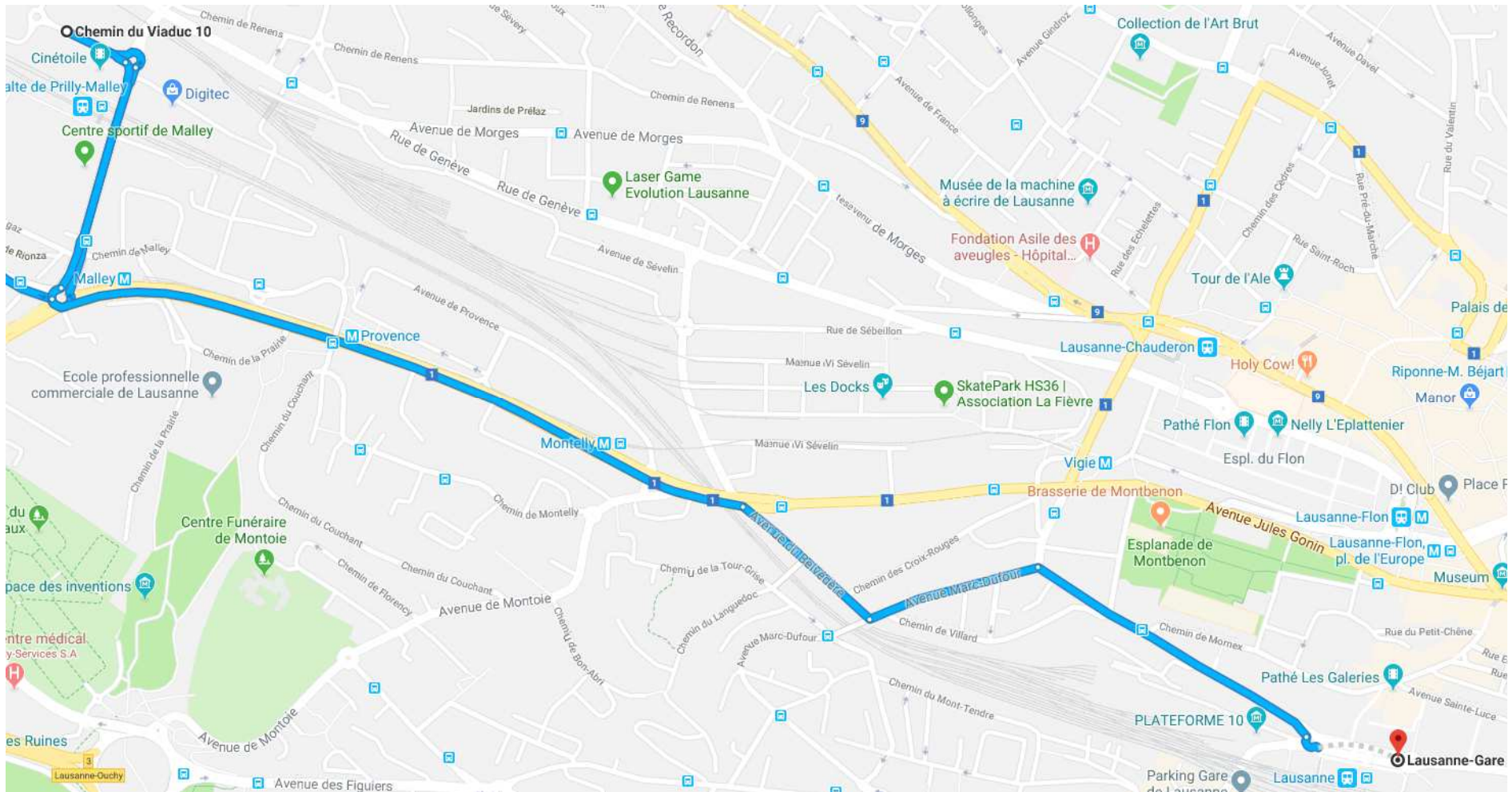


Prilly-Malley



Arrêt TL : Prilly, Galicien ligne 32 sud

Prilly-Malley - Lausanne



Lausanne, gare



Arrêt TL : Lausanne, gare «Hôtel Continental»