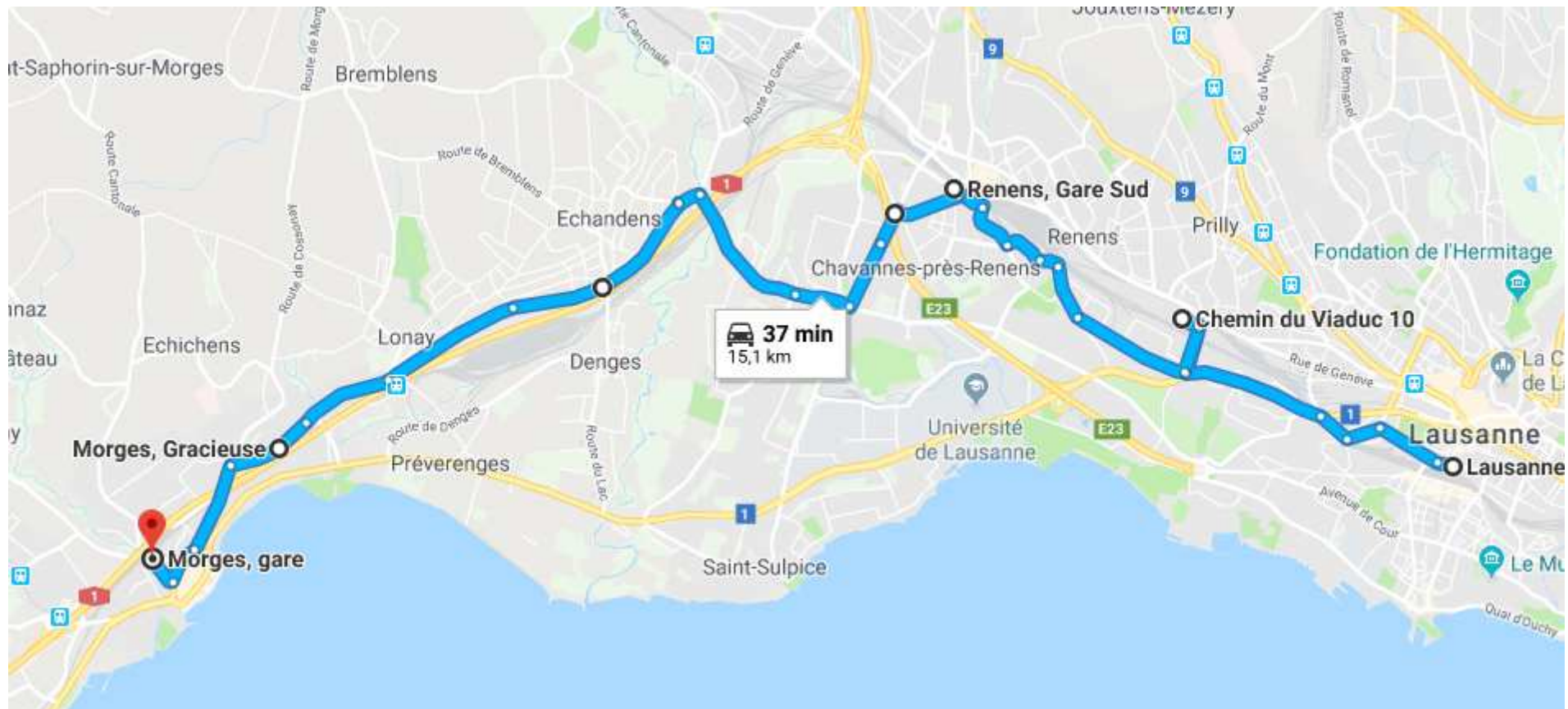




Remplacement CFF Lausanne-Morges

Vincent Borel

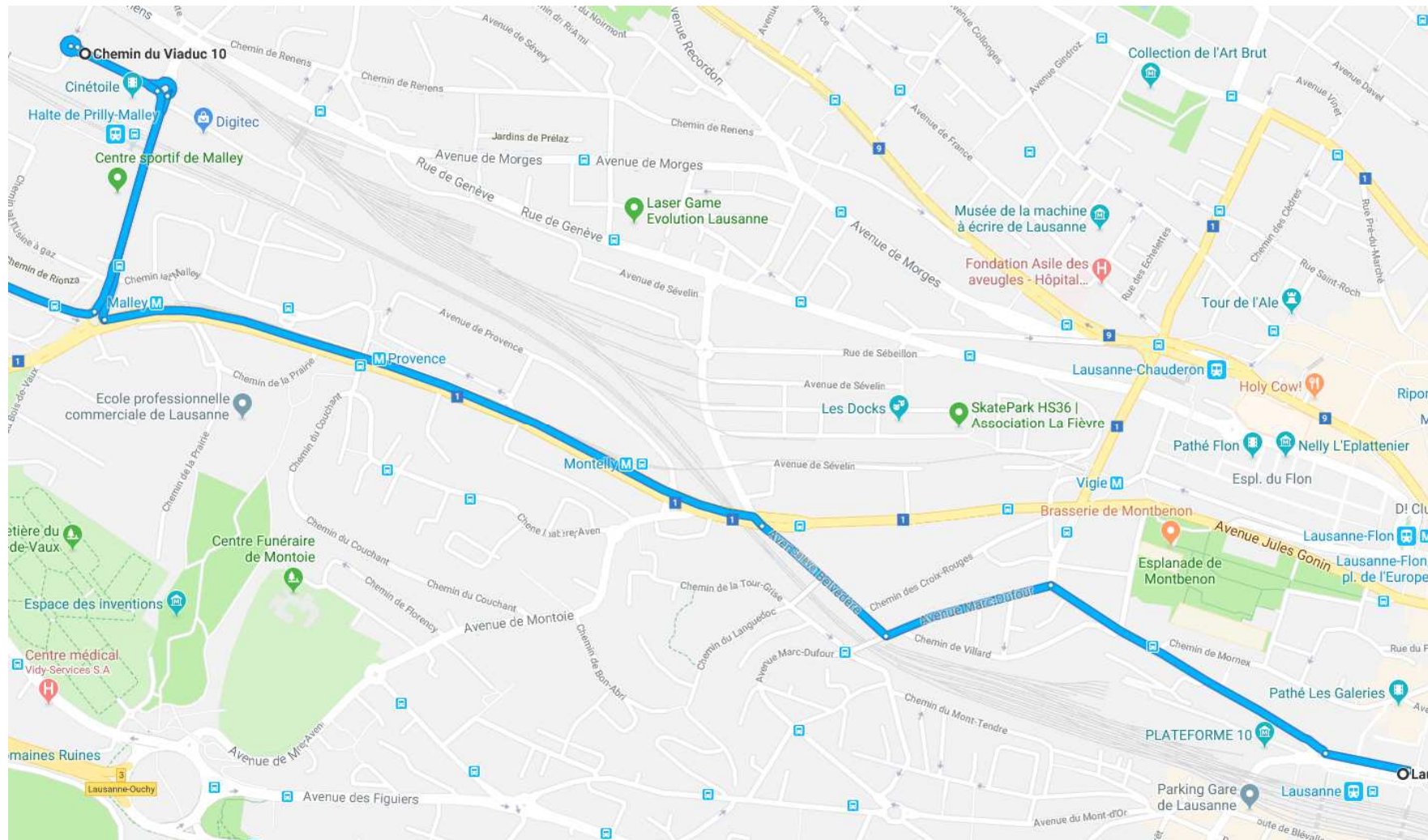
Parcours Lausanne - Morges



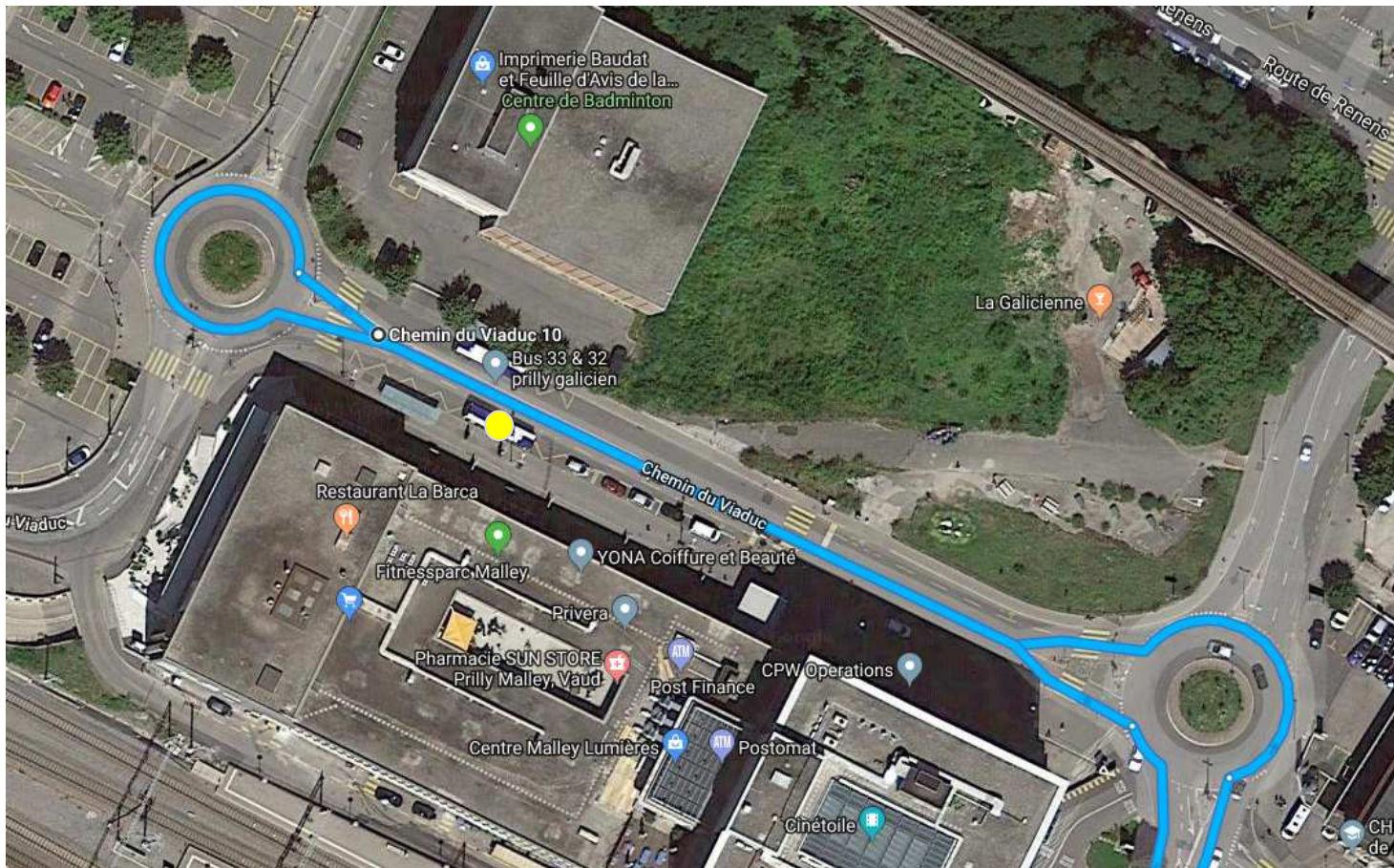
Lausanne, gare



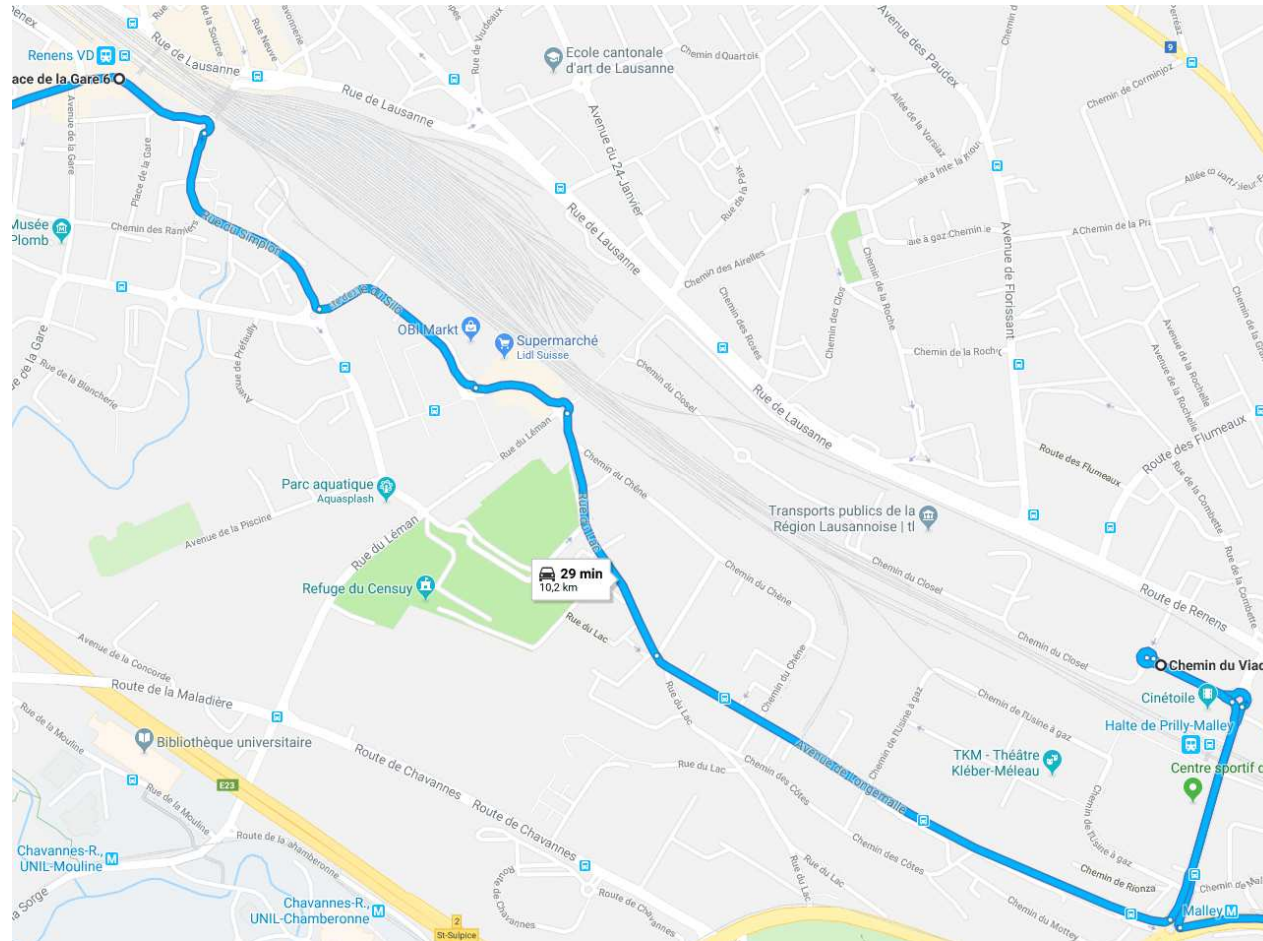
Lausanne, gare – Prilly-Malley



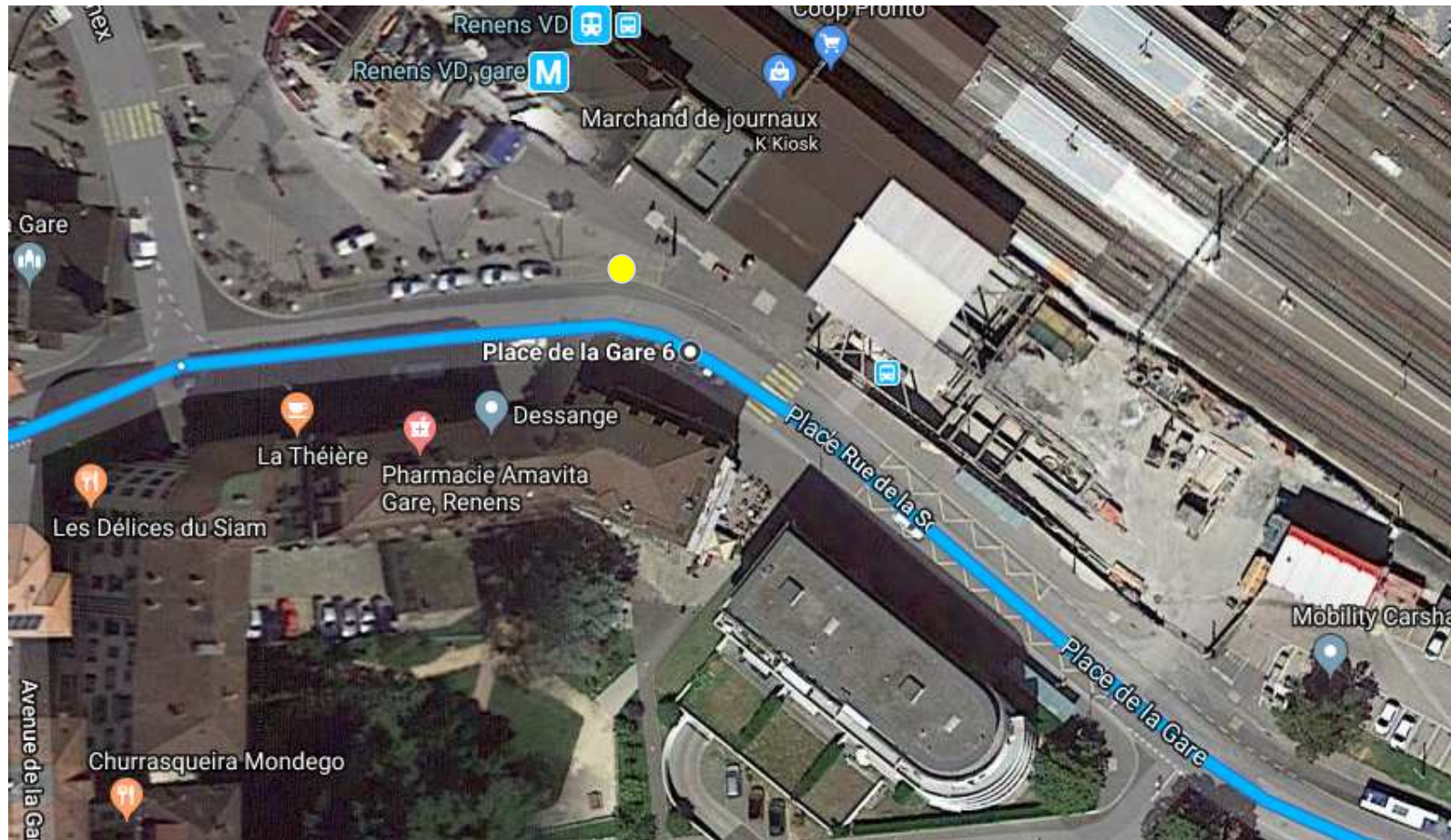
Prilly-Malley



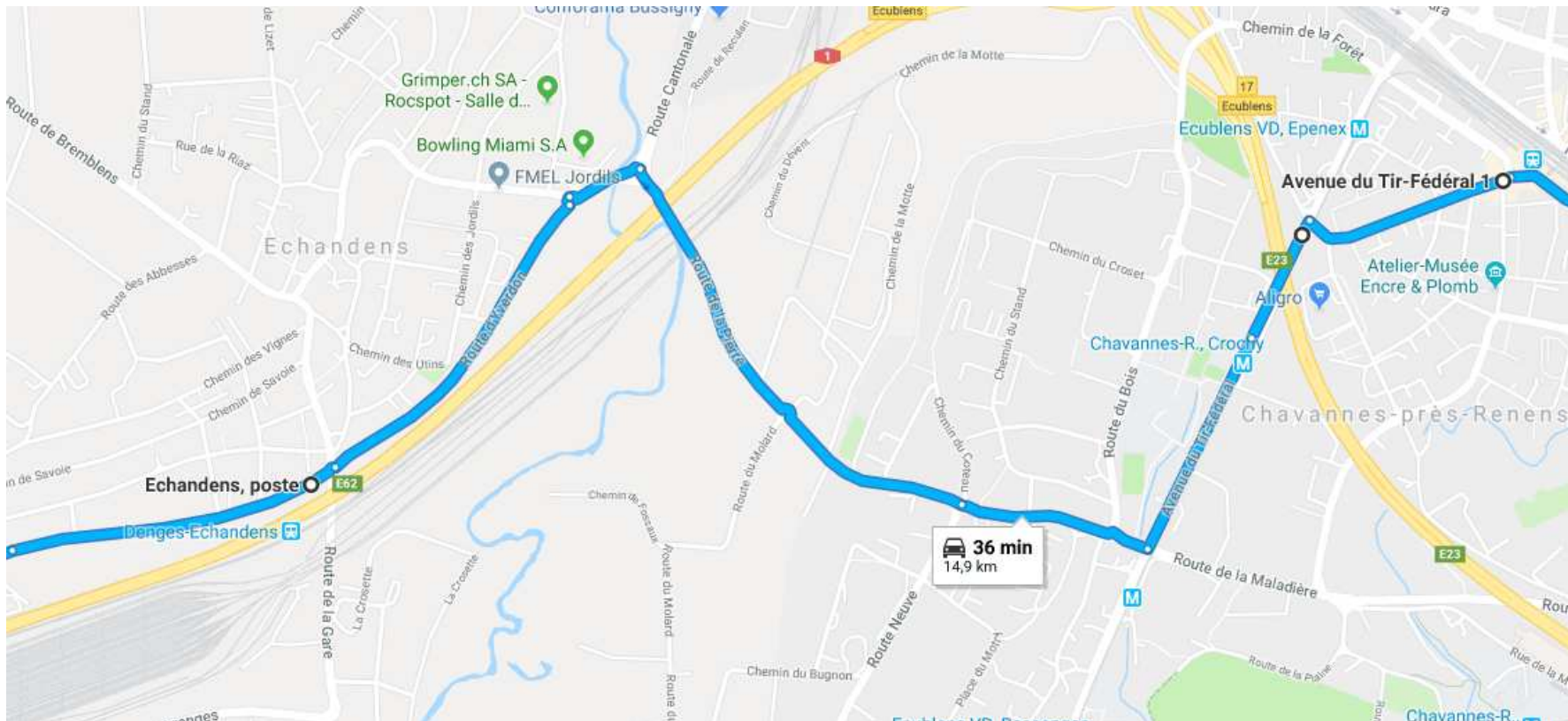
Prilly-Malley – Renens



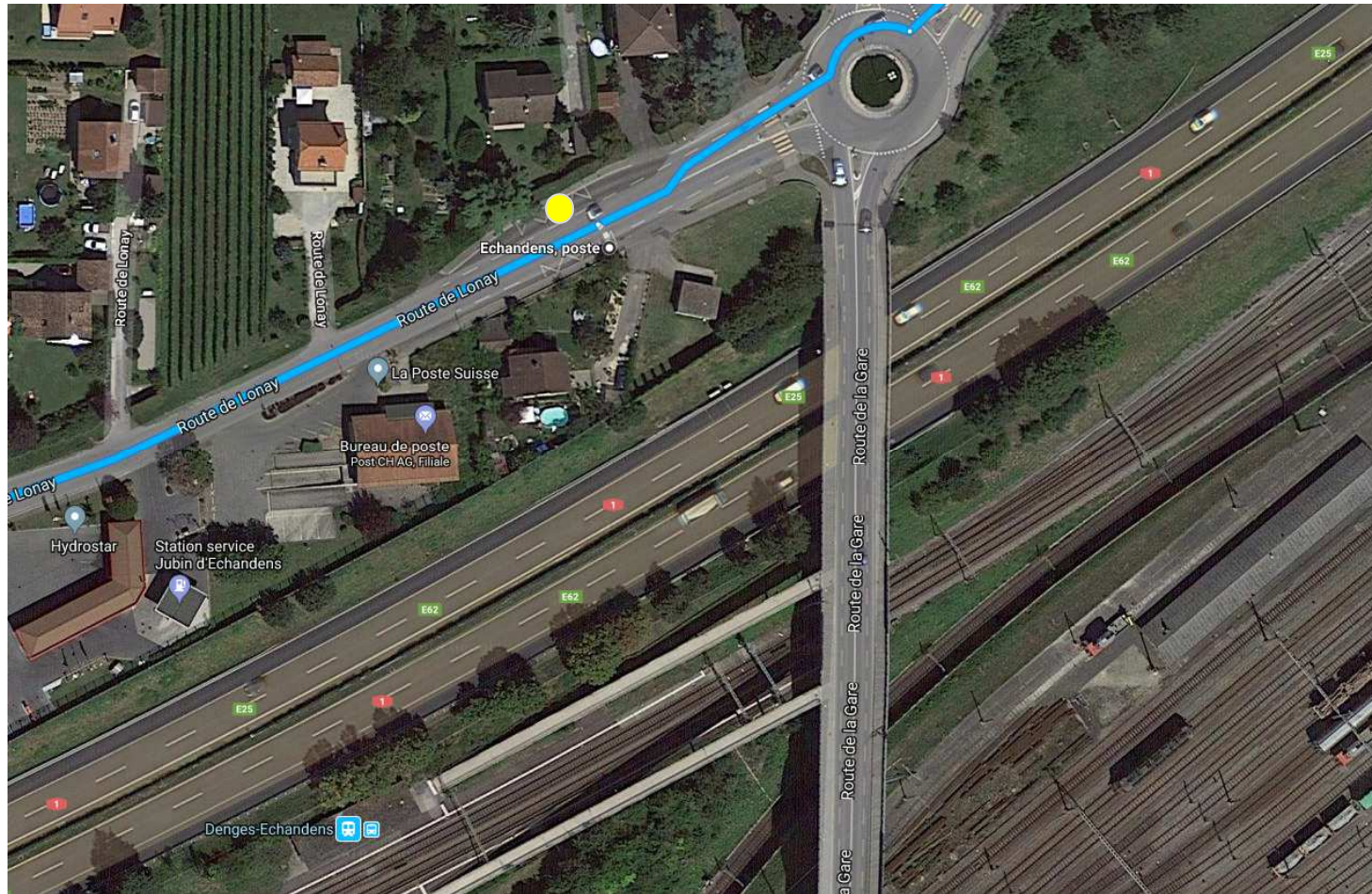
Renens, direction Morges



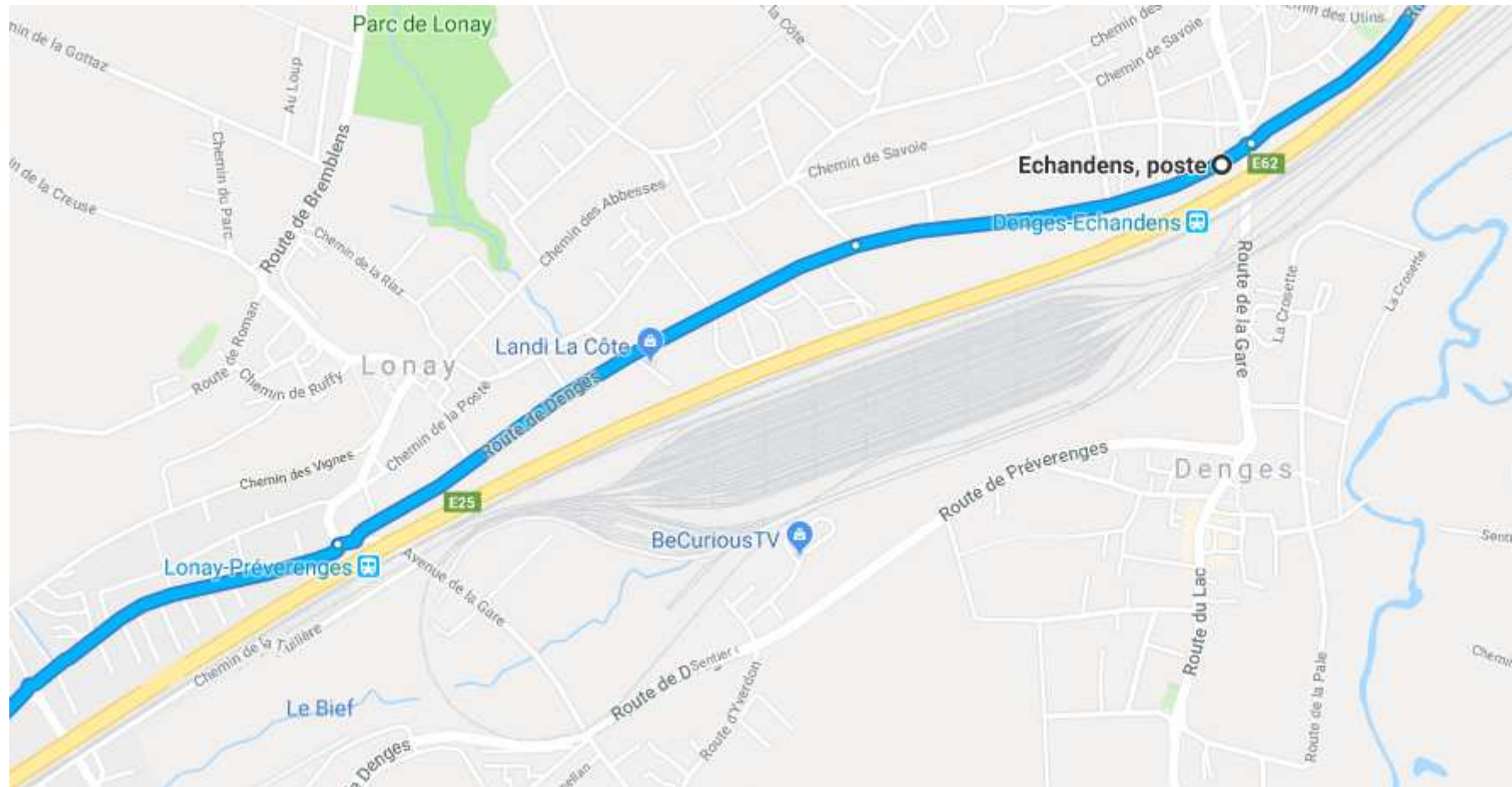
Renens – Denges-Echandens



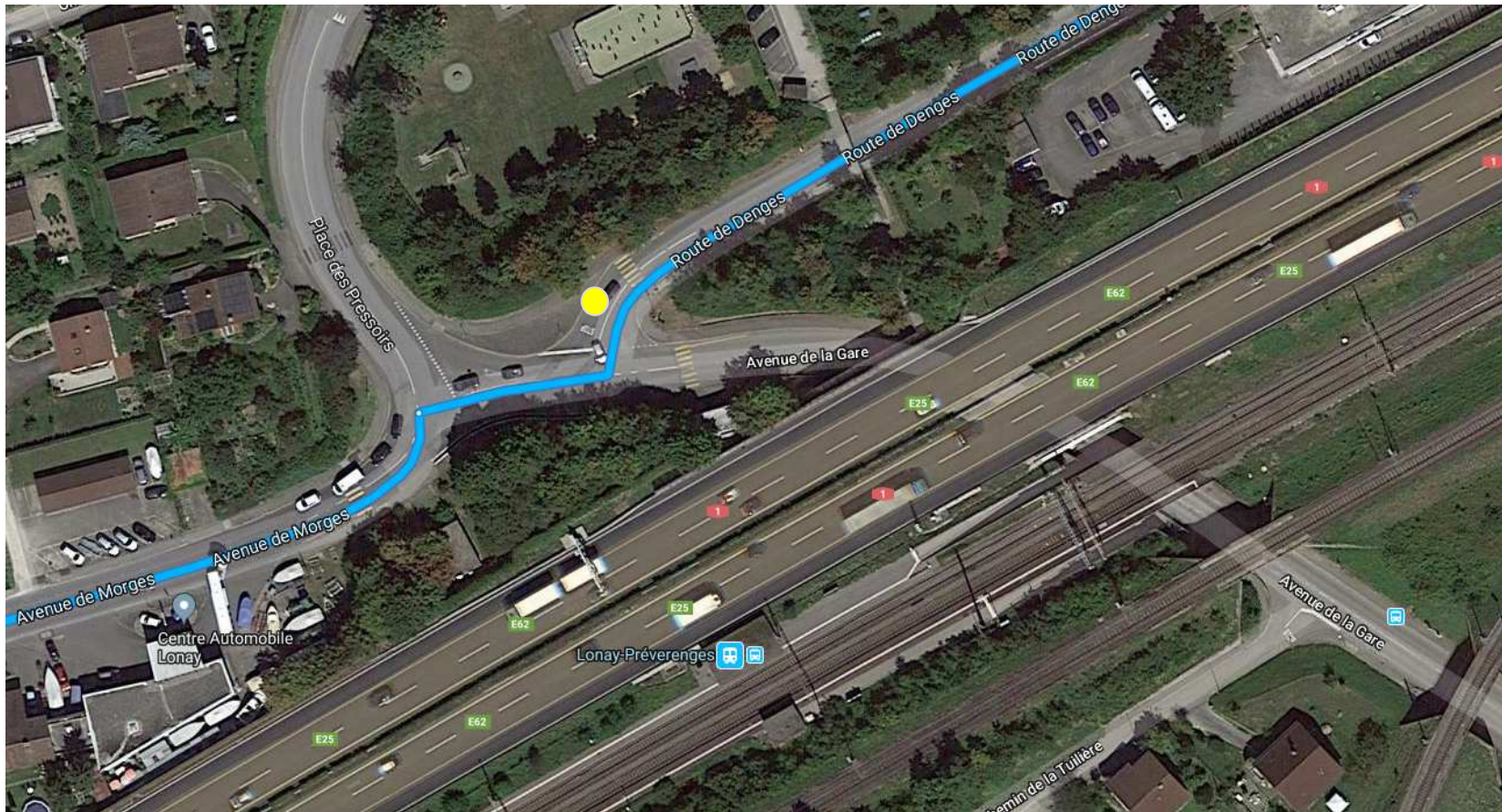
Denges-Echandens



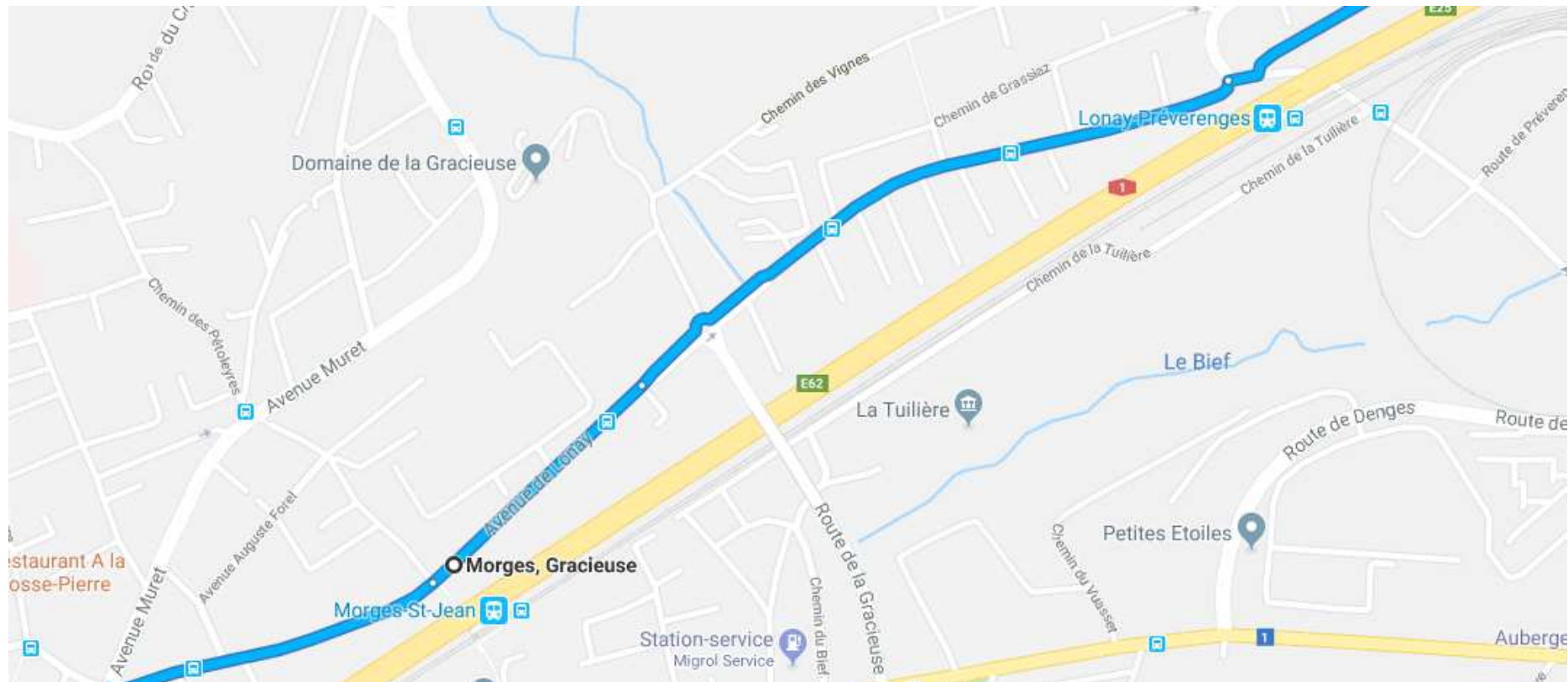
Denges-Echandens – Lonay-Préverenges



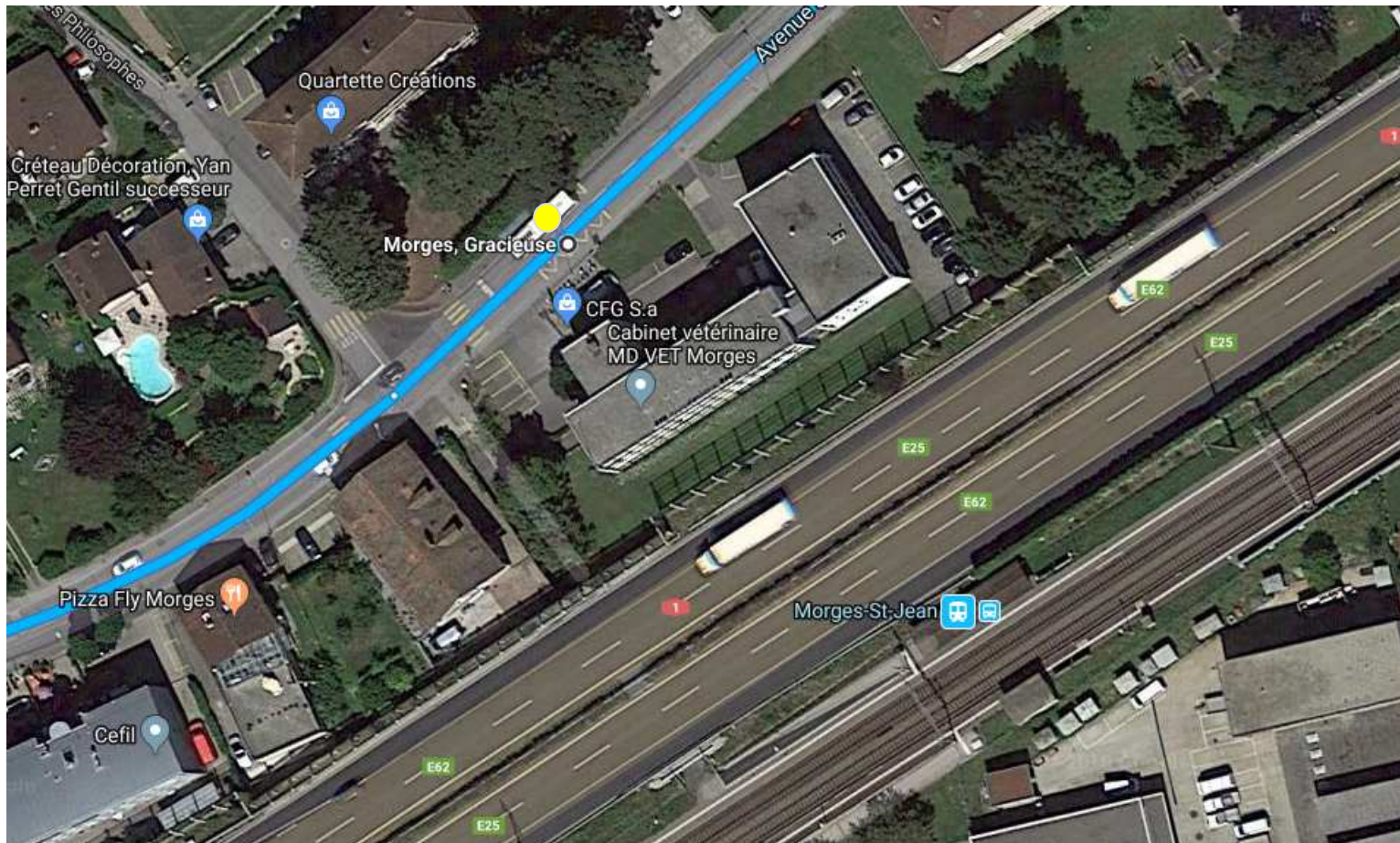
Lonay-Préverenges



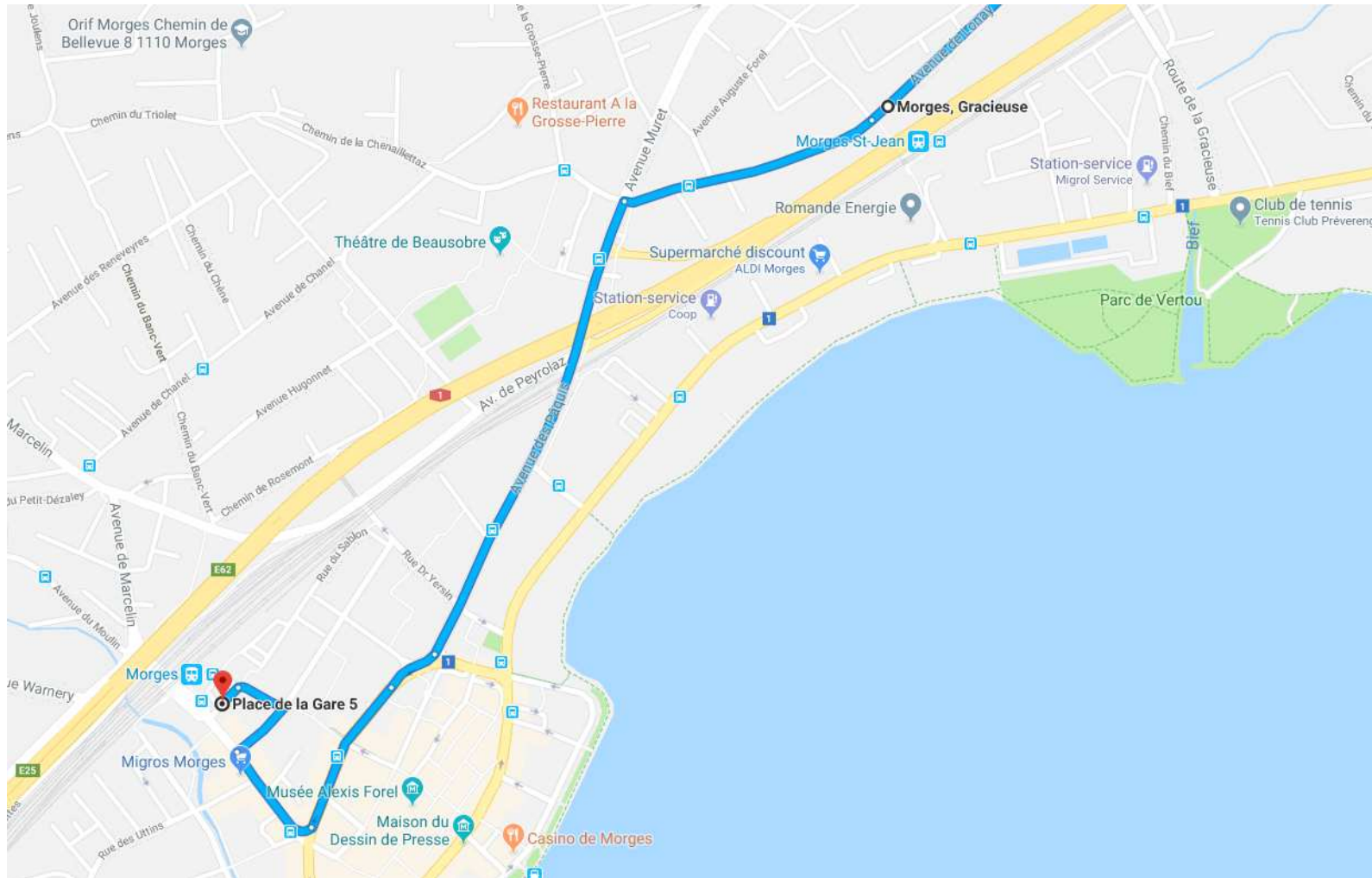
Lonay-Préverenges – Morges-St-Jean



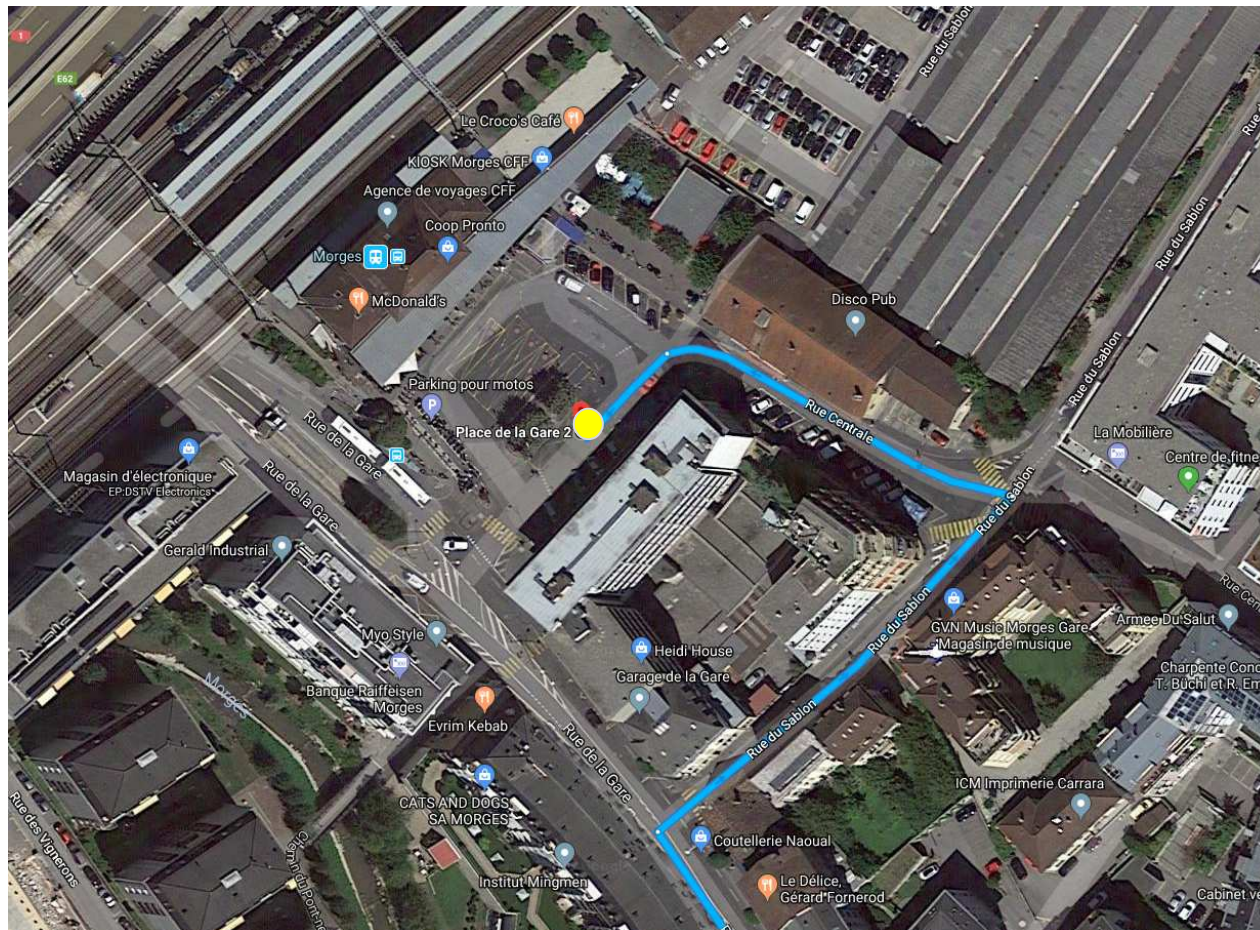
Morges-St-Jean



Morges-St-Jean - Morges

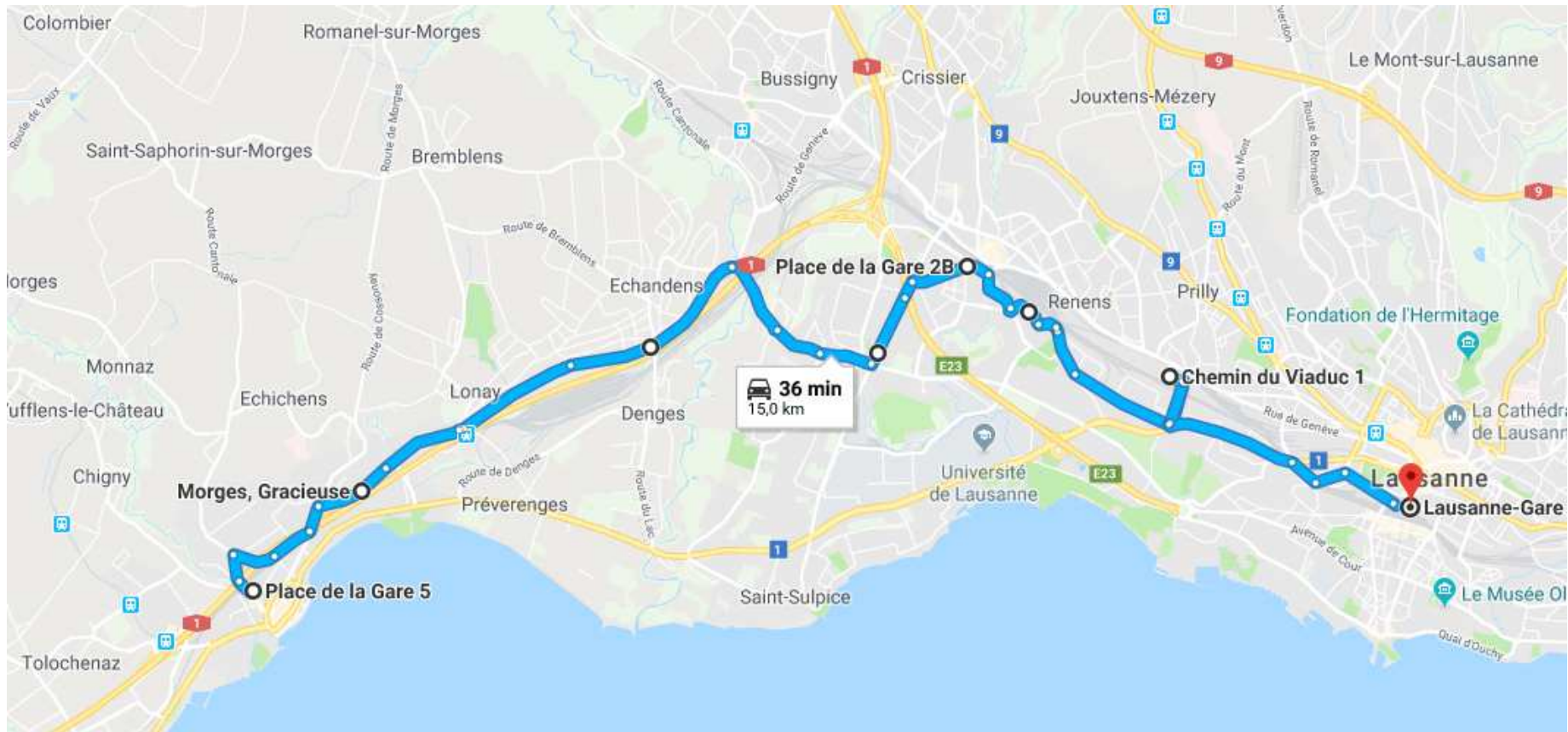


Morges, gare

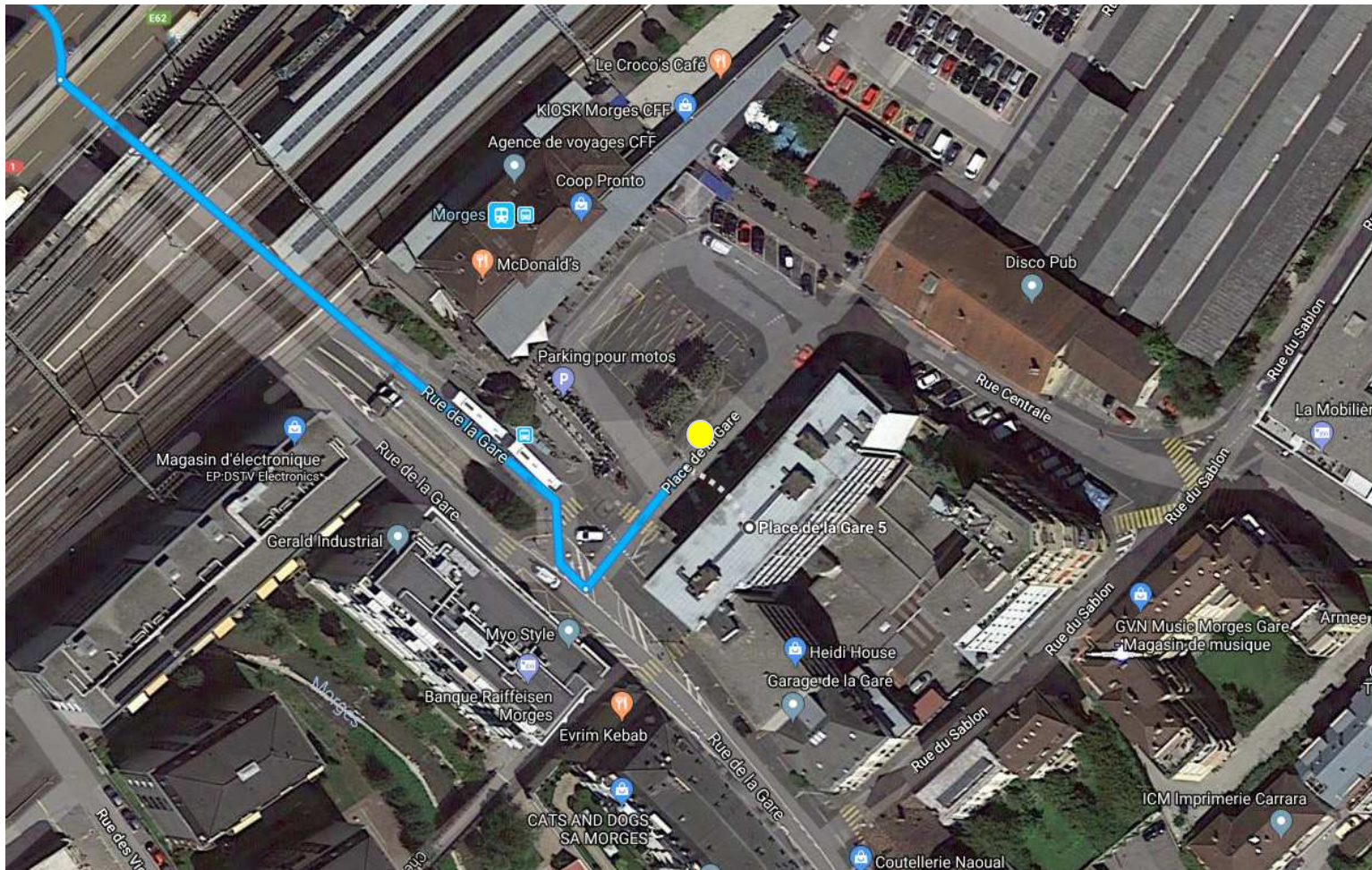


Arrêt MBC : Morges, gare ligne 724

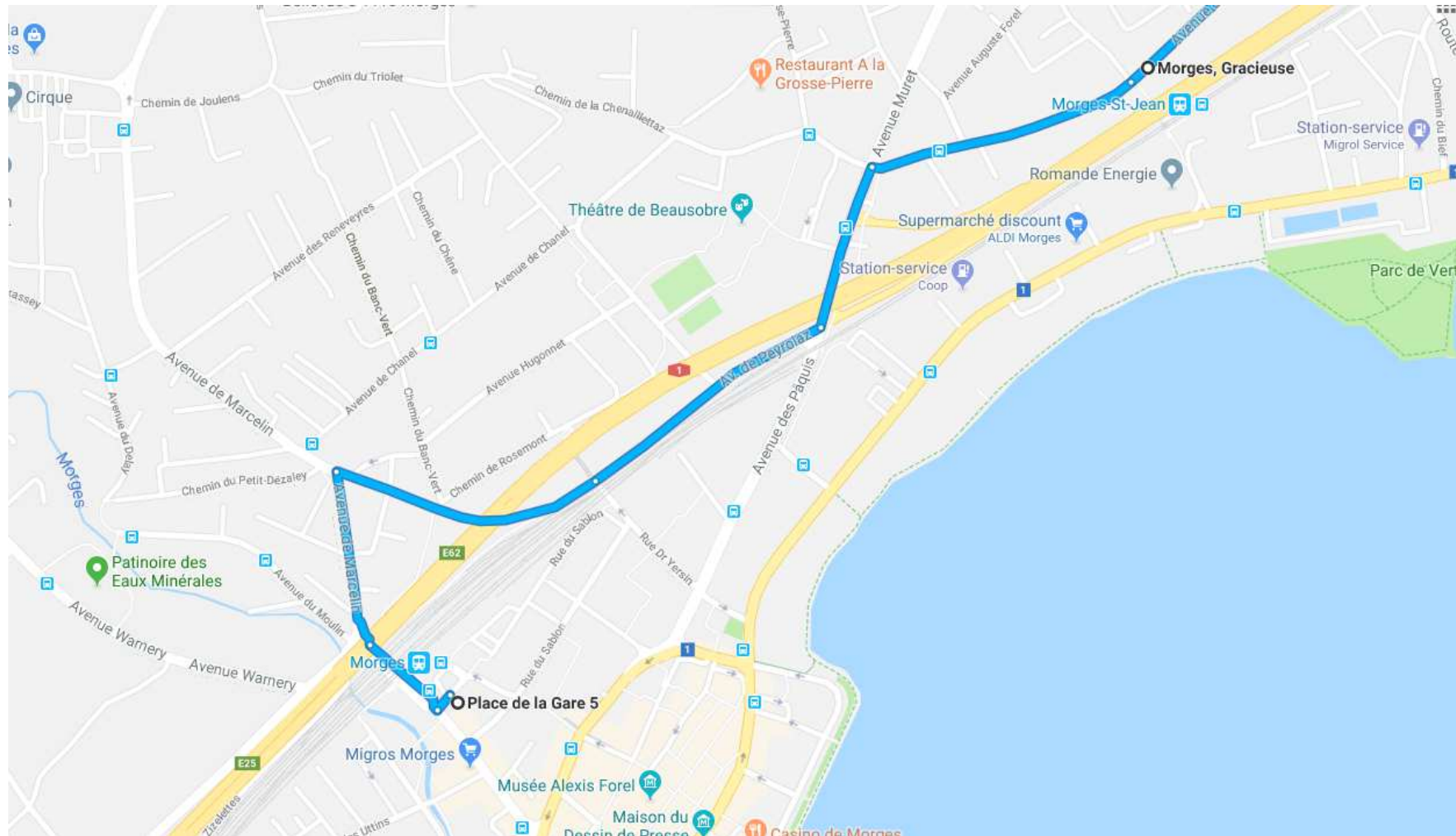
Parcours Morges - Lausanne



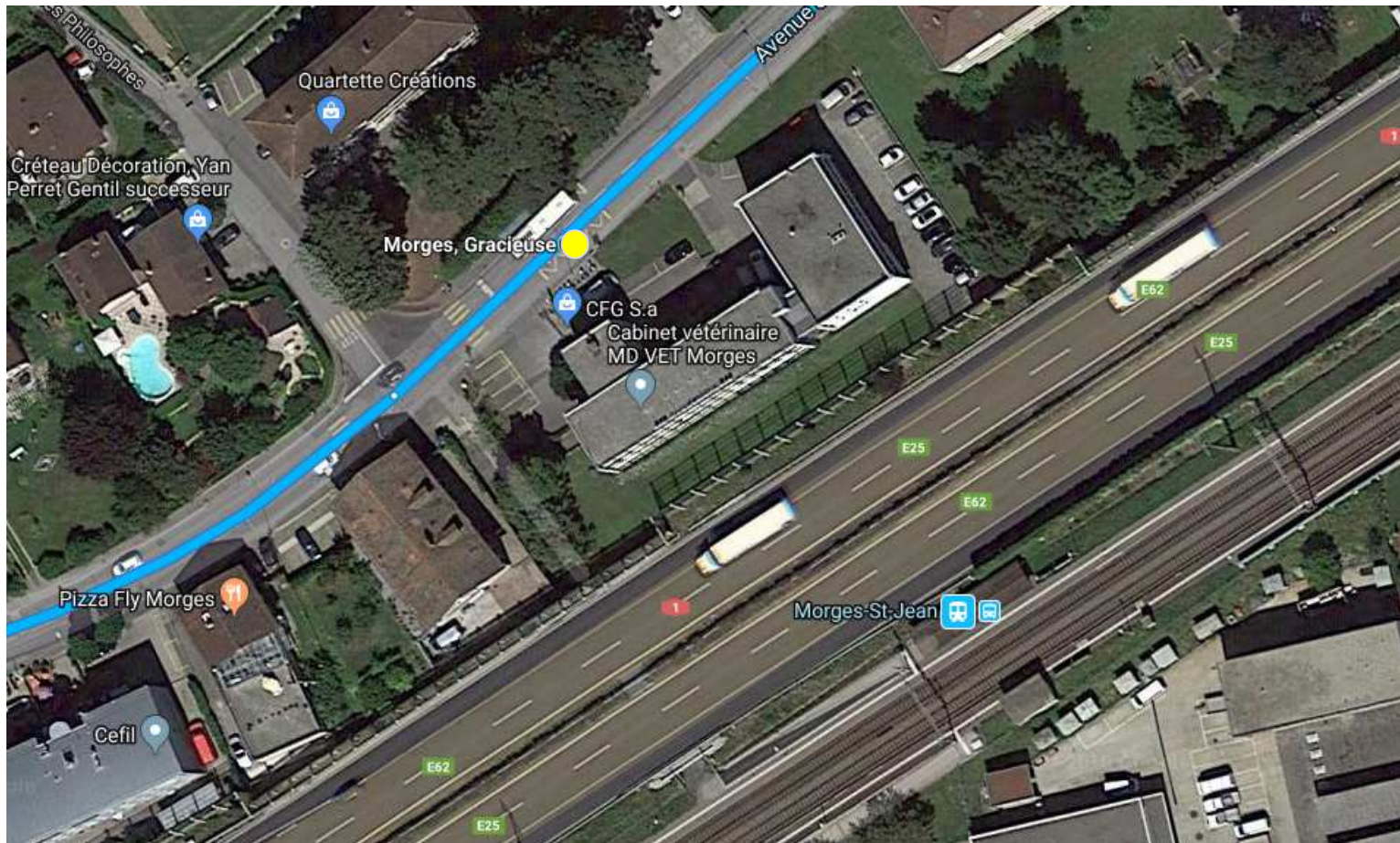
Morges, gare



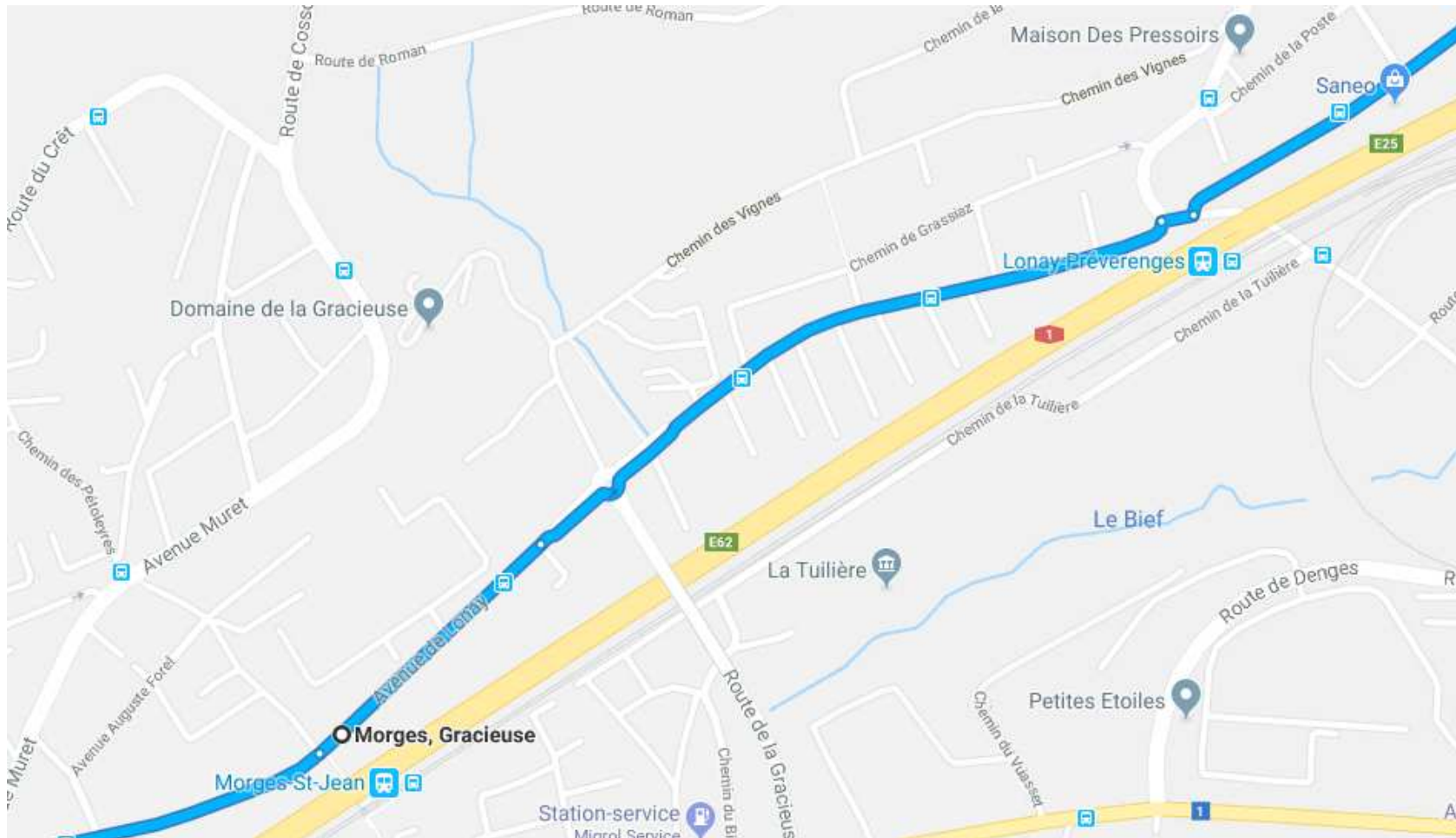
Morges – Morges-St-Jean



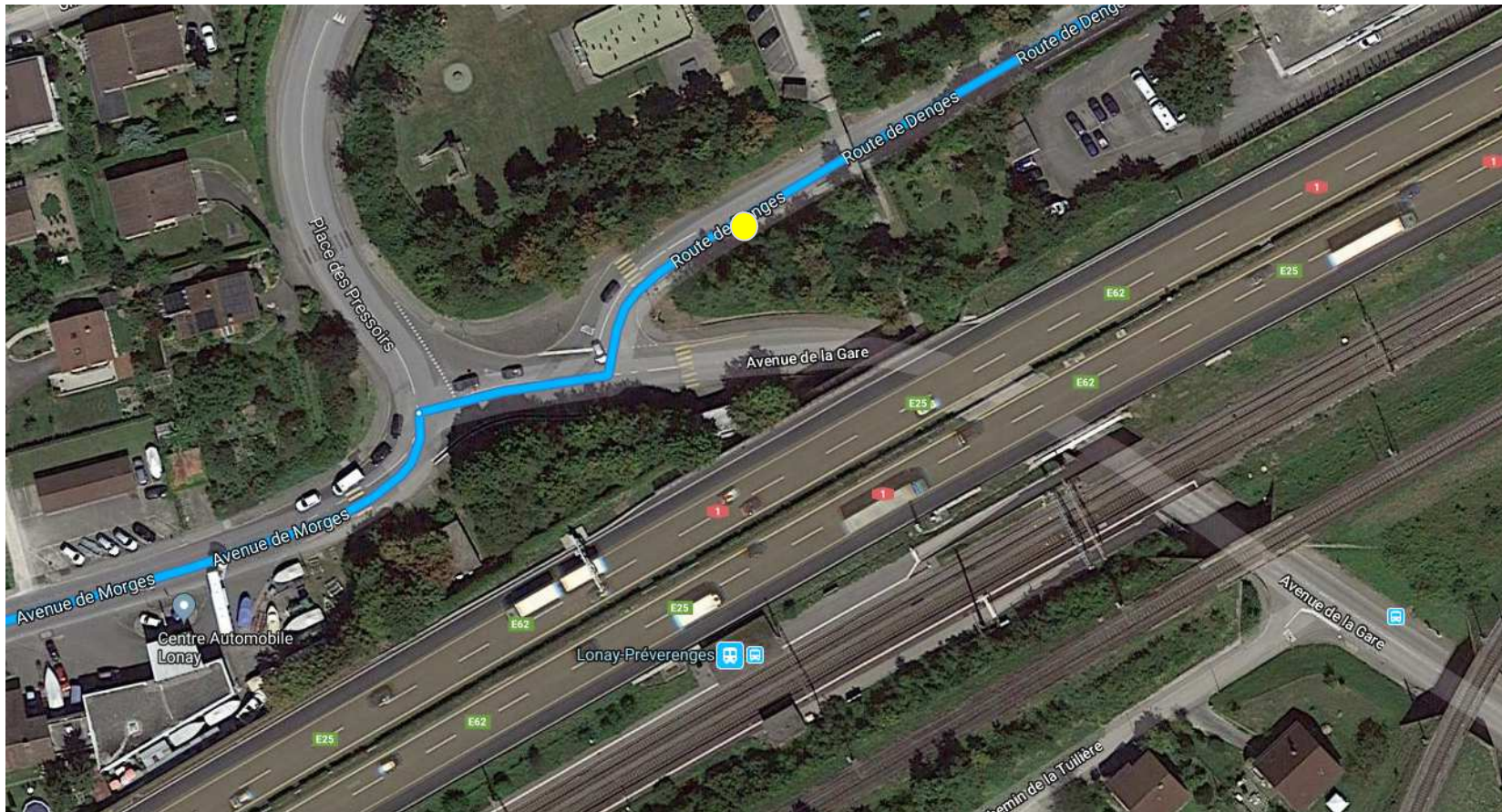
Morges-St-Jean



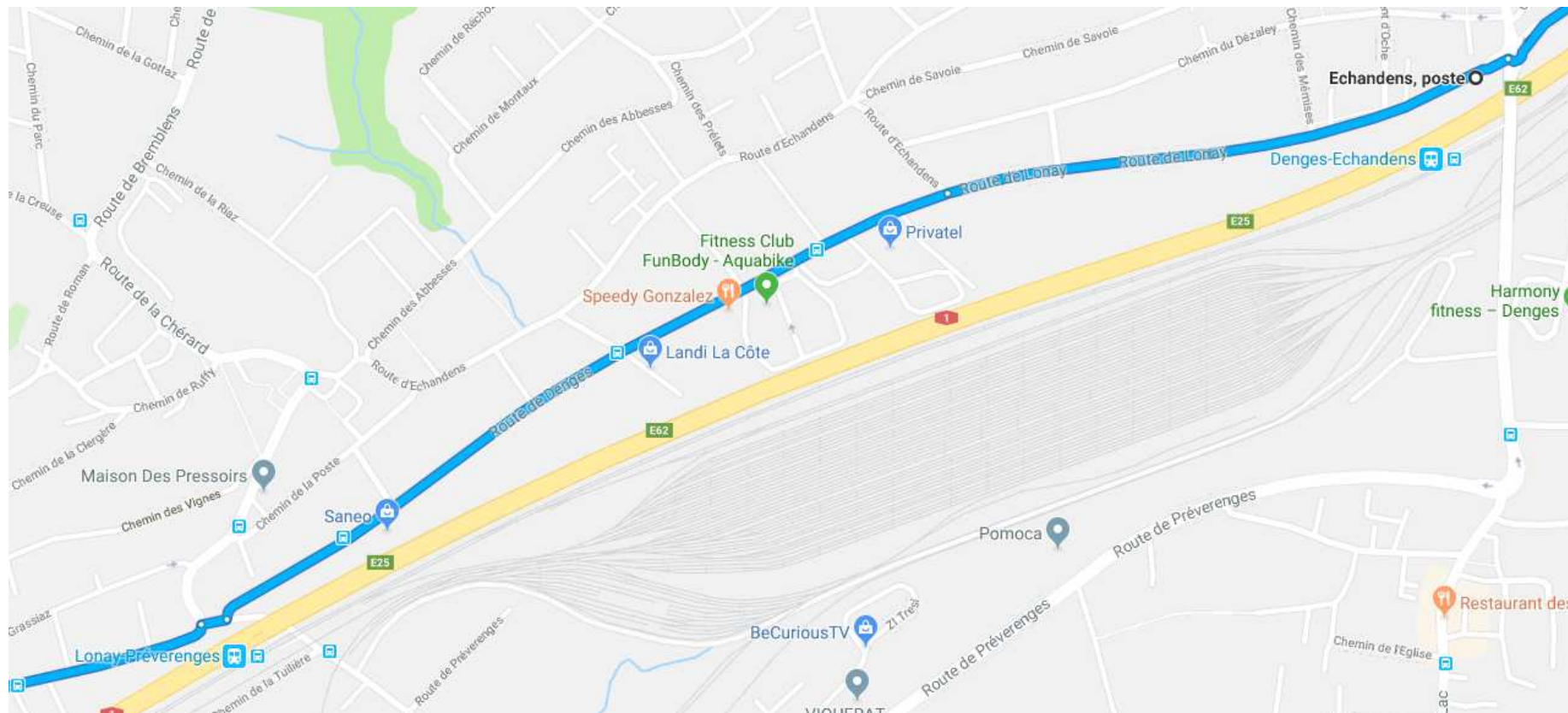
Morges-St-Jean – Lonay-Préverenges



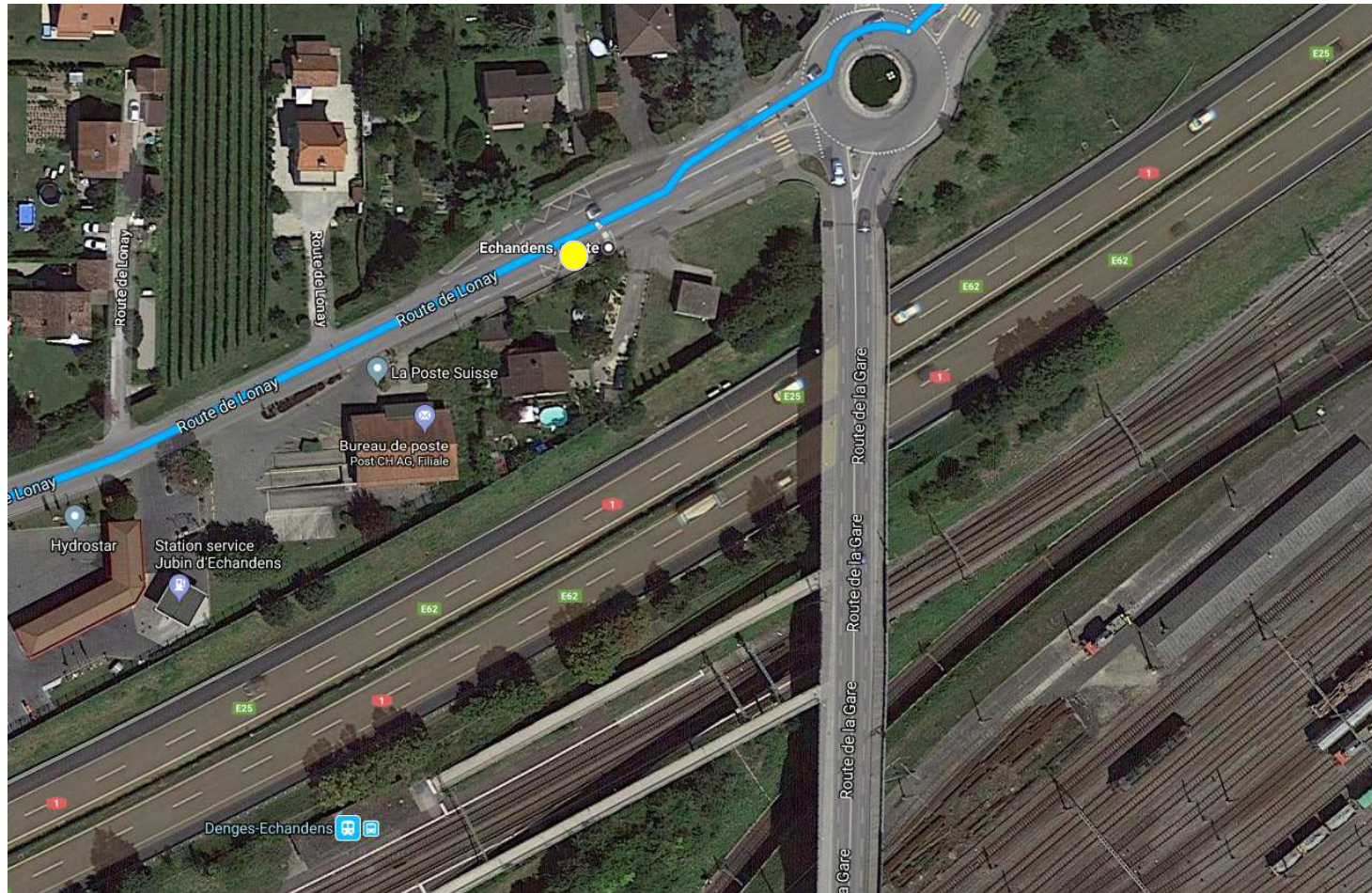
Lonay-Préverenges



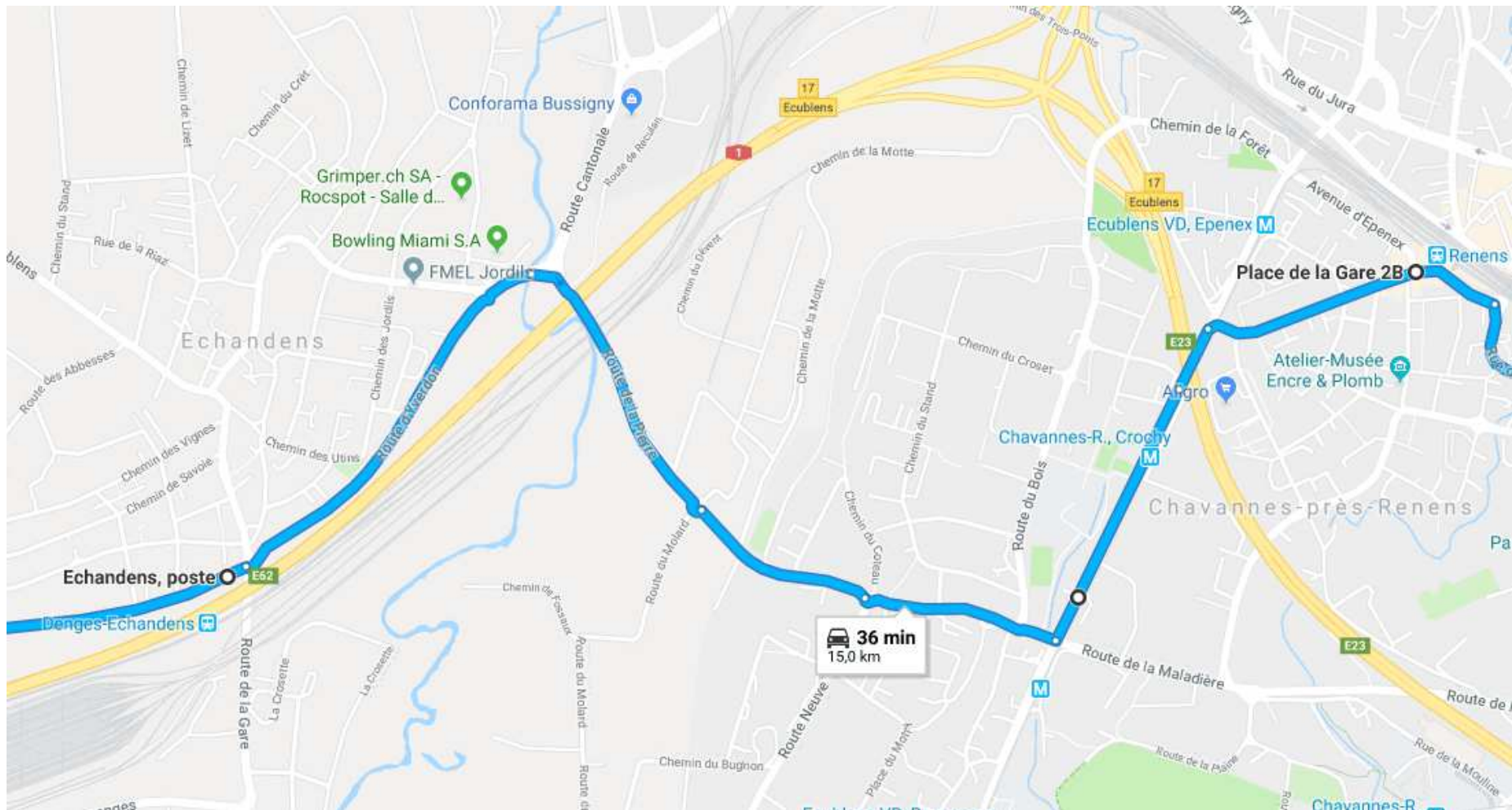
Lonay-Préverenges – Denges-Echandens



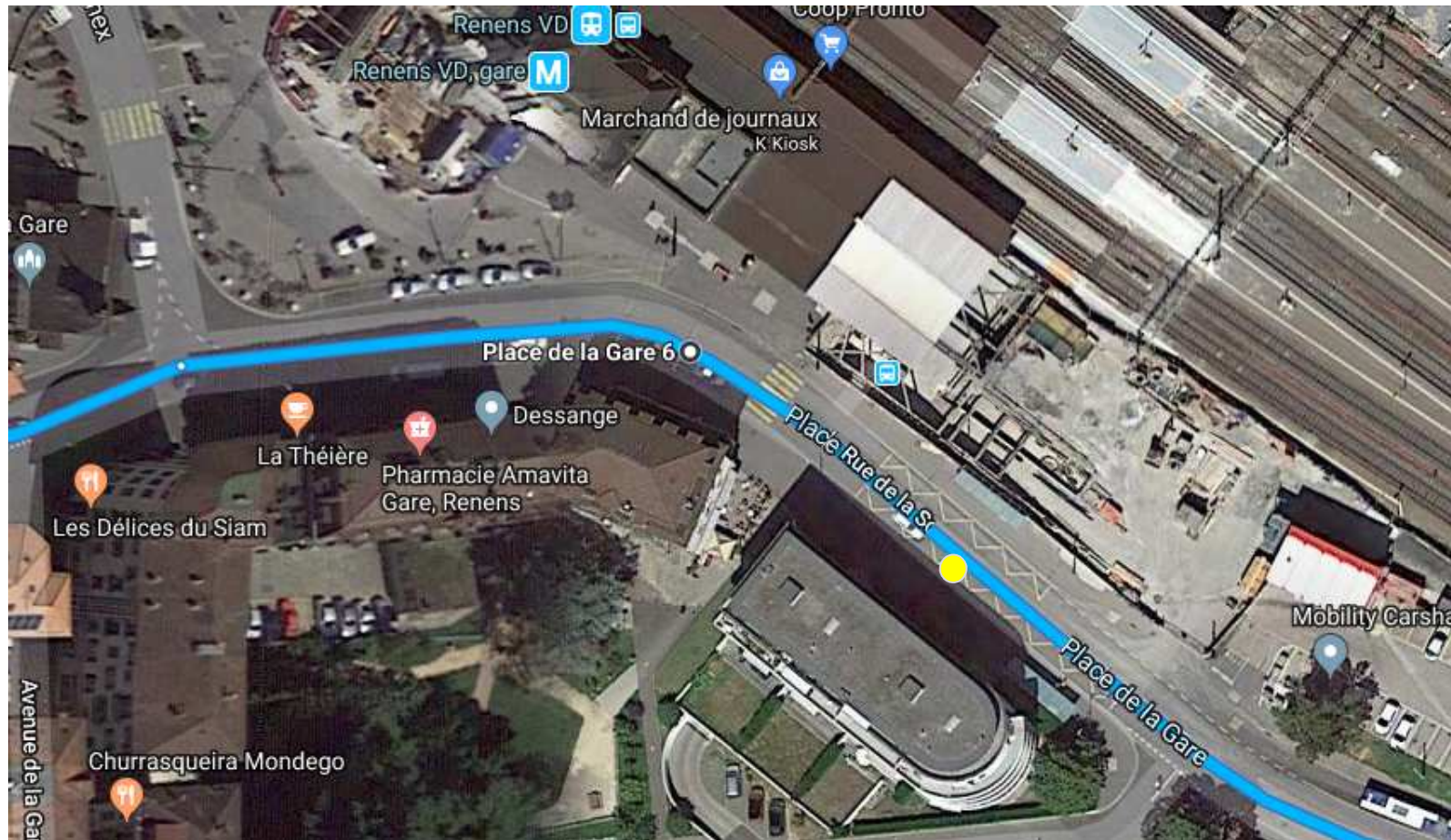
Denges-Echandens



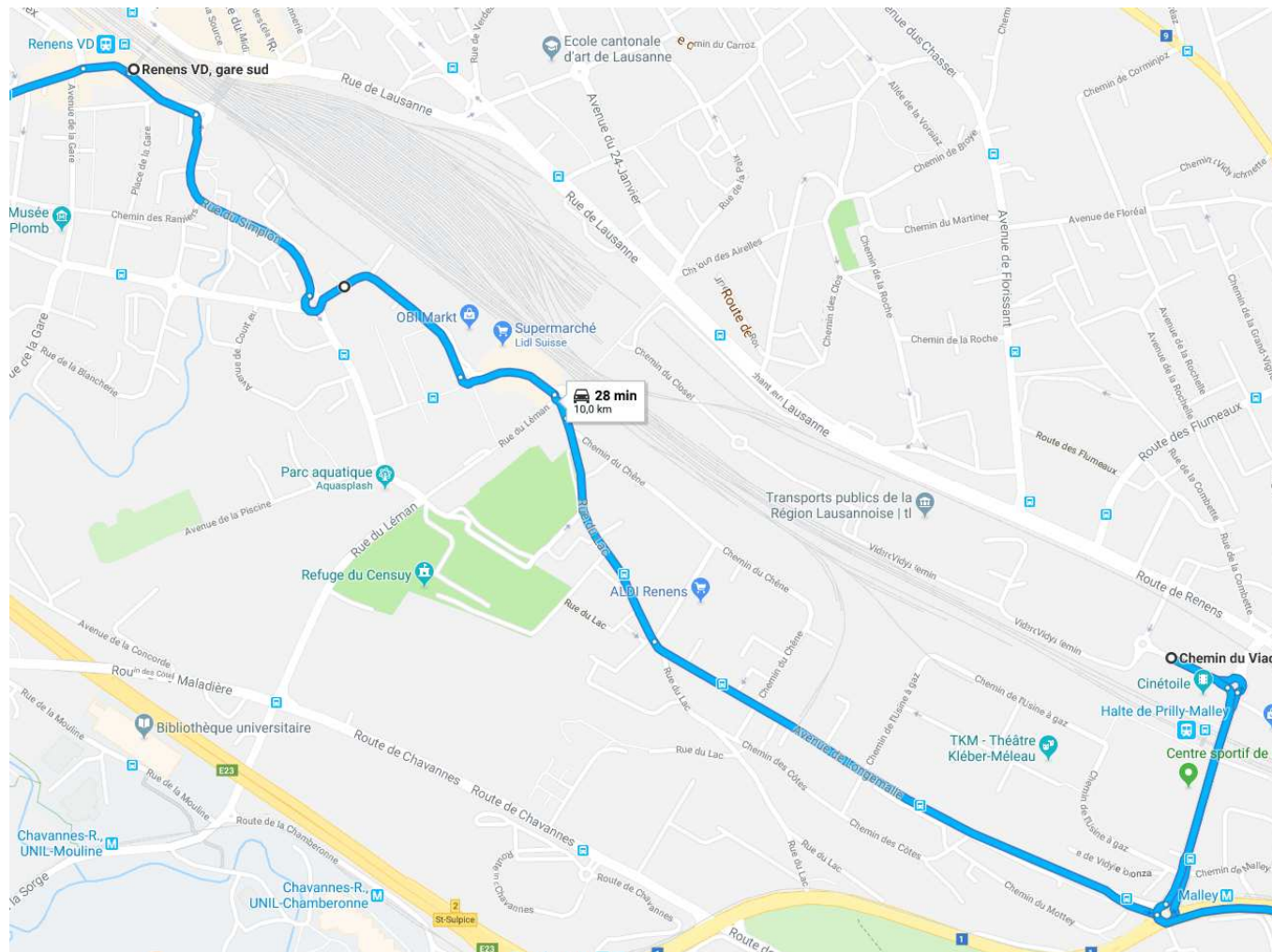
Denges-Echandens - Renens



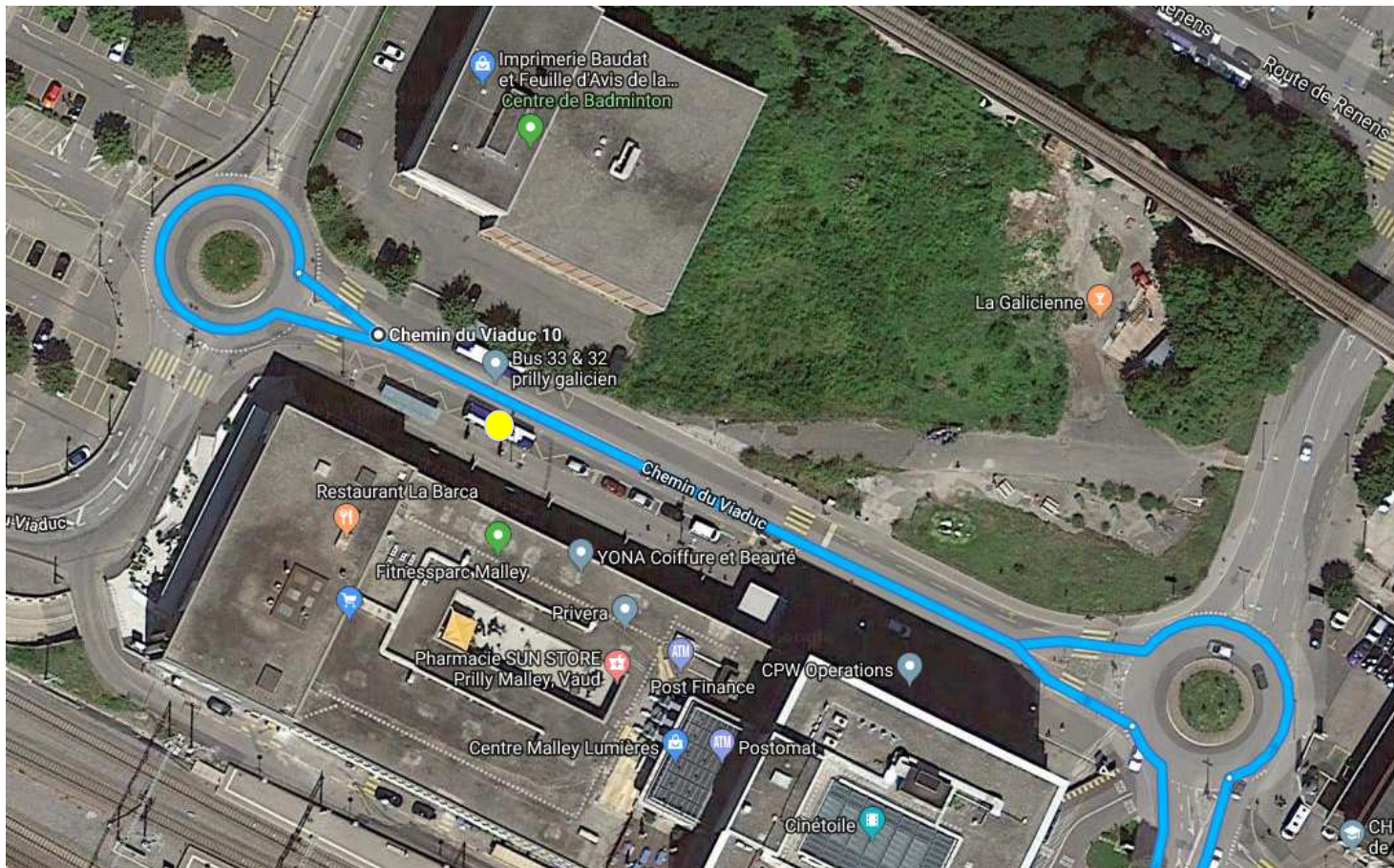
Renens, direction Lausanne



Renens – Prilly-Malley

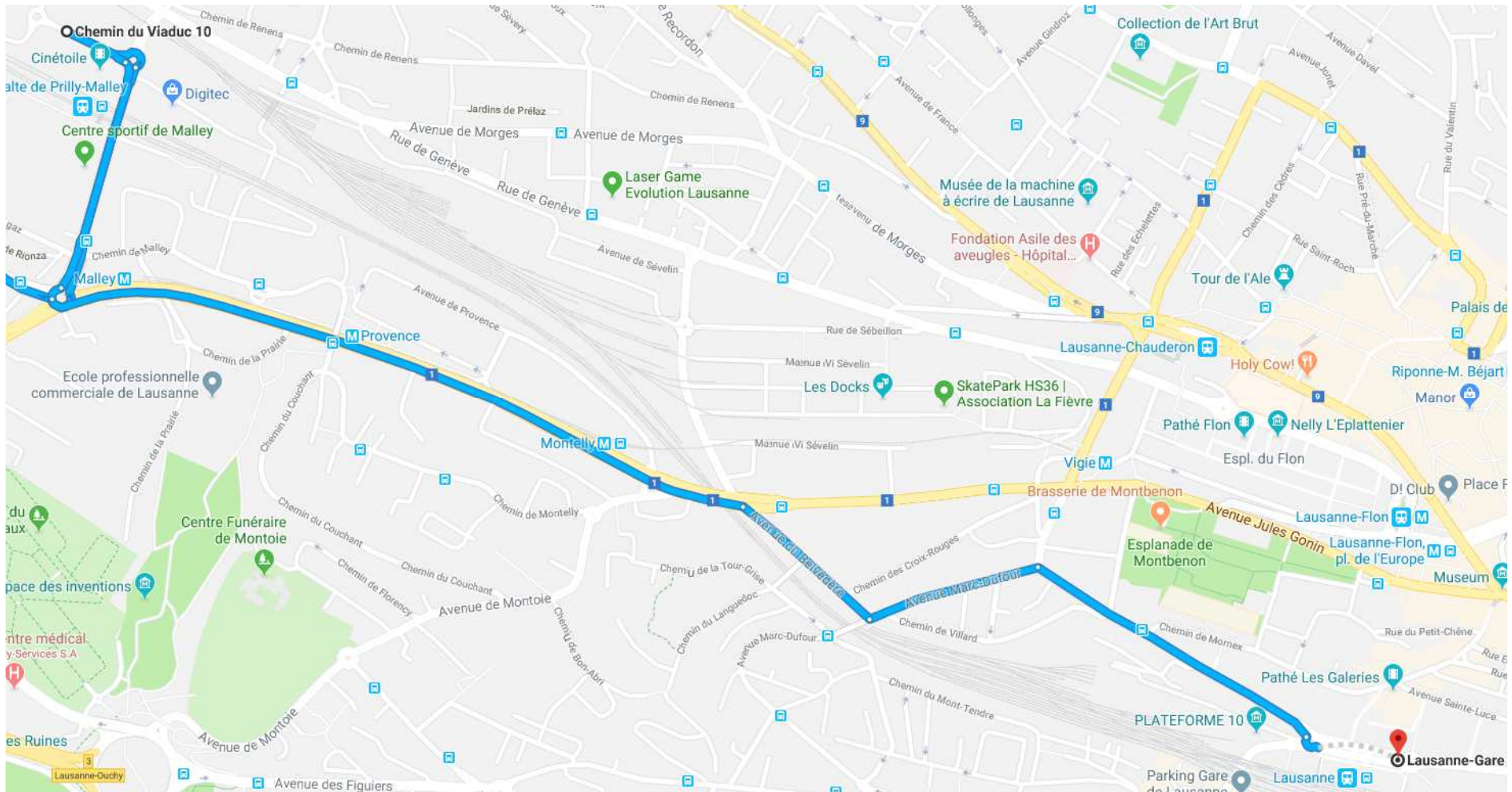


Prilly-Malley



Arrêt TL : Prilly, Galicien ligne 32 sud

Prilly-Malley - Lausanne



Lausanne, gare

